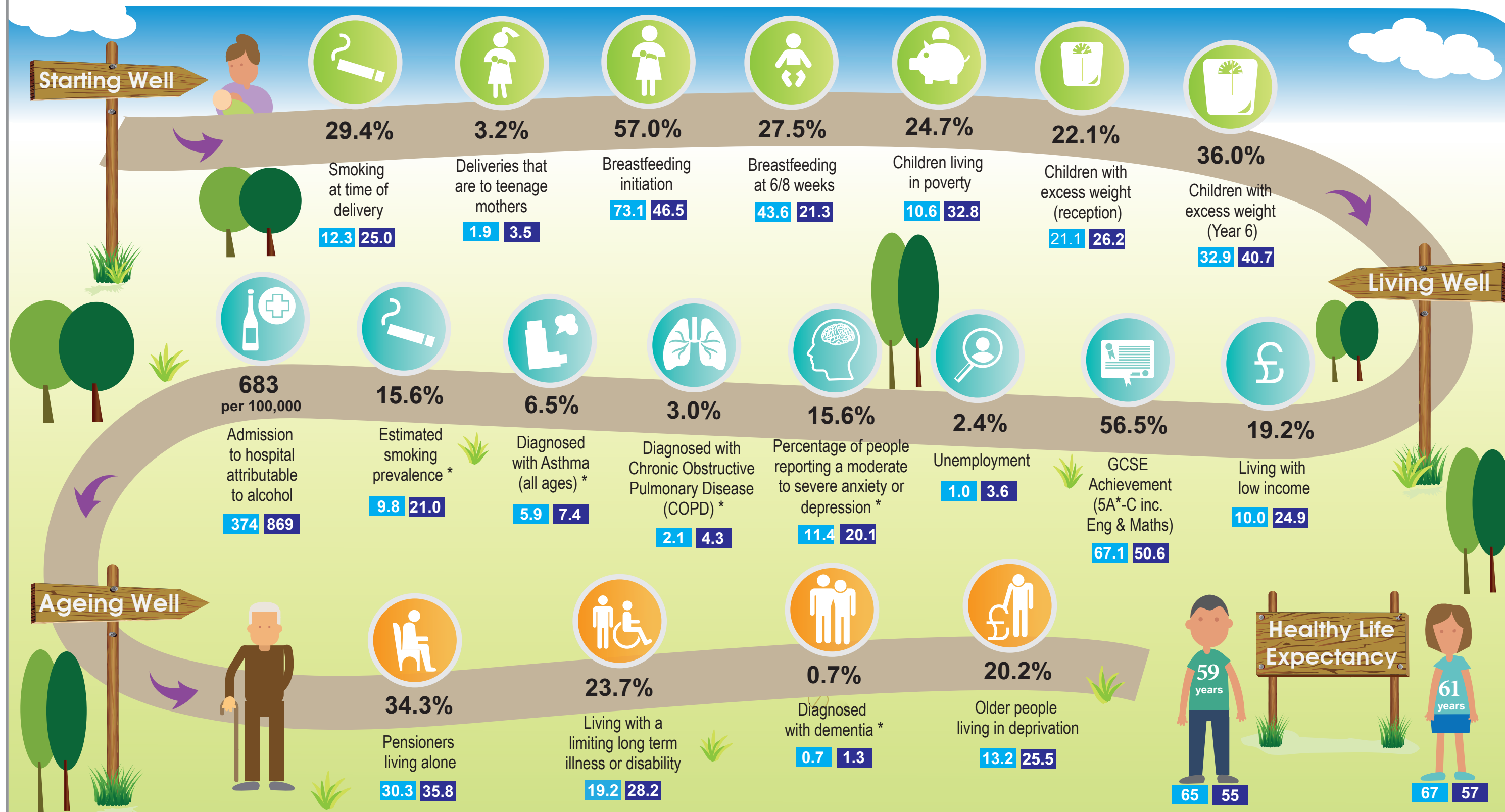


A walk through the life course in Spennymoor



Key
Best in County Durham
Worst in County Durham



Indicator		England	County Durham	Teesdale	Durham	Chester-le-Street & District	Mid-Durham	Great Aycliffe and Middlesbrough	Weardale	Derwent Valley	4 Together Partnership	East Durham Rural	Spennymoor	Stanley	3 Towns Partnership	Bishop Auckland & Shildon	East Durham	Best AAP	Worst AAP
Children living in poverty	%	19.9	23.9	10.6	15.9	17.2	18.2	24.4	22.4	20.7	26.5	20.6	24.7	28.0	29.0	32.8	30.0	10.6	32.8
Breastfeeding initiation at 6/8 weeks	%	n/a	27.6	42.8	43.6	28.9	35.2	25.5	31.0	31.0	27.4	30.2	27.5	25.0	25.3	23.0	21.3	43.6	21.3
Diagnosed with Chronic Obstructive Pulmonary Disease (COPD)*	%	1.9	3.3	2.2	2.1	2.5	2.8	3.1	3.0	3.3	3.3	3.1	3.0	3.7	2.9	3.7	4.3	2.1	4.3
Smoking at time of delivery	%	n/a	18.4	12.3	12.0	15.2	14.7	21.9	18.7	14.8	20.8	16.2	19.4	19.5	23.0	25.0	21.4	12.3	25.0
Living with low income	%	14.6	17.8	10.0	11.1	14.0	15.0	19.6	19.2	17.2	20.9	15.7	19.2	22.2	22.9	24.9	22.4	10.0	24.9
Breastfeeding initiation	%	n/a	54.3	73.1	66.2	56.9	60.0	56.3	58.6	58.5	56.3	57.2	57.0	51.3	52.5	48.5	46.5	73.1	46.5
People reporting moderate to extreme anxiety or depression *	%	13.7	16.6	12.4	13.8	15.2	19.1	17.8	11.4	16.9	15.4	19.5	15.6	16.7	19.3	15.2	20.1	11.4	20.1
Older people living in deprivation	%	16.2	19.4	13.2	14.1	16.9	17.7	21.6	22.3	22.0	21.3	16.8	20.2	25.2	25.1	25.5	21.1	13.2	25.5
Unemployment	%	1.8	2.4	1.0	1.4	1.8	1.9	2.8	2.2	2.0	2.8	2.0	2.4	3.2	2.9	3.6	3.2	1.0	3.6
Estimated smoking prevalence*	%	15.5	15.5	9.8	12.9	13.2	18.6	12.3	15.1	16.3	13.9	17.2	13.4	18.2	14.9	19.0	21.0	9.8	21.0
Admissions to hospital attributable to alcohol	rate per 100,000	n/a	656.0	374.2	632.4	581.8	512.4	530.9	559.9	632.8	734.8	616.5	682.6	699.6	621.4	754.4	868.5	374.2	868.5
GCSE Achievement (5A*-C inc. Eng & Maths)	%	56.6	57.6	58.9	66.5	58.0	60.9	50.6	58.9	60.0	62.4	67.1	56.5	53.3	54.3	52.3	57.0	67.1	50.6
Pensioners living alone	%	31.5	33.0	30.3	31.3	31.8	33.8	30.7	35.8	33.8	33.9	32.5	34.3	34.2	34.7	34.5	33.6	30.3	35.8
Children with excess weight (reception)	%	22.2	23.7	21.1	21.3	24.3	22.3	25.1	21.3	25.2	24.6	22.5	22.1	26.2	22.4	23.7	24.1	21.1	26.2
Children with excess weight (Year 6)	%	33.6	36.6	33.9	34.1	35.1	35.7	33.3	32.9	39.0	34.3	36.2	36.0	40.7	36.0	38.7	38.1	32.9	40.7
Male healthy life expectancy	years	63.5	59.2	65.0	61.9	61.6	61.3	59.1	60.0	59.6	57.5	59.0	59.4	57.3	57.9	57.8	55.1	65.0	55.1
Female healthy life expectancy	years	64.8	60.6	67.4	64.2	62.9	62.6	59.9	61.5	60.9	59.6	60.5	60.7	58.6	59.1	58.4	56.6	67.4	56.6
Limiting long term illness or disability	%	17.6	23.6	20.4	19.2	21.4	21.8	24.1	23.2	23.2	25.4	24.0	23.7	24.6	25.0	25.7	28.2	19.2	28.2
Diagnosed with asthma*	%	5.9	6.6	6.9	5.9	6.3	6.6	6.7	6.5	6.6	7.1	6.2	6.5	6.5	7.0	7.4	6.3	5.9	7.4
Diagnosed with dementia*	%	0.8	0.9	1.3	0.9	0.9	0.8	1.0	1.0	1.0	1.0	0.9	0.7	0.8	1.0	1.2	1.0	0.7	1.3
Deliveries that are to teenage mothers	%	1.1	2.1	sup	1.9	2.2	2.0	2.2	1.9	2.0	2.6	3.5	3.2	2.1	2.1	2.5	2.8	1.9	3.5

Approximate numbers rounded to the nearest 50

	3 Towns Partnership	4 Together Partnership	Bishop Auckland and Shildon	Chester-le-Street & District	Derwent Valley	Durham	East Durham	East Durham Rural	Great Aycliffe and Middlesbrough	Mid-Durham	Spennymoor	Stanley	Teesdale	Weardale
Children living in poverty	1,850	1,250	2,950	1,650	2,000	1,700	5,300	1,300	1,300	1,650	1,250	2,150	450	1,150
Breastfeeding initiation at 6/8 weeks	350	200	400	400	550	800	700	350	200	650	250	400	250	250
Smoking at time of delivery**	80	50	140	70	80	70	230	60	50	80	50	70	20	50
Living with low income	7,750	5,500	12,050	7,800	9,200	7,550	21,350	5,550	5,000	7,700	5,500	9,150	2,650	5,100
Breastfeeding initiation	700	450	850	800	1,050	1,250	1,500	650	500	1,050	550	800	400	500
People reporting moderate to extreme anxiety or depression *	n/a	n/a	n/a	n/a	n/a	n/a	n/a	n/a	n/a	n/a	n/a	n/a	n/a	n/a
Older people living in deprivation	2,150	1,550	3,100	2,400	2,950	2,200	4,850	1,500	1,350	2,250	1,500	2,500	1,100	1,500
Unemployment	900	850	1,600	1,200	1,350	1,100	2,950	800	850	1,200	850	1,300	300	650
Estimated smoking prevalence*	n/a	n/a	n/a	n/a	n/a	n/a	n/a	n/a	n/a	n/a	n/a	n/a	n/a	n/a
Admissions to hospital attributable to alcohol	n/a	n/a	n/a	n/a	n/a	n/a	n/a	n/a	n/a	n/a	n/a	n/a	n/a	n/a
GCSE Achievement (5A*-C inc. Eng & Maths)	n/a	n/a	n/a	n/a	n/a	n/a	n/a	n/a	n/a	n/a	n/a	n/a	n/a	n/a
Pensioners living alone	2,150	1,550	3,100	2,400	2,950	2,200	4,850	1,500	1,350	2,250	1,500	2,500	1,100	1,500
Children with excess weight (reception)	300	200	400	400	500	400	850	250	250	400	250	400	150	200
Children with excess weight (Year 6)	450	300	650	550	600	600	1,150	400	300	550	300	500	200	250
Male healthy life expectancy	n/a	n/a	n/a	n/a	n/a	n/a	n/a	n/a	n/a	n/a	n/a	n/a	n/a	n/a
Female healthy life expectancy	n/a	n/a	n/a	n/a	n/a	n/a	n/a	n/a	n/a	n/a	n/a	n/a	n/a	n/a
Limiting long term illness or disability	8,550	6,800	12,500	11,650	12,550	13,500	26,650	8,400	6,350	11,150	6,800	10,050	5,300	6,050
Diagnosed with asthma*	1,300	3,400	2,950	2,650	1,600	2,900	9,800	1,900	2,400	1,850	850	2,450	4,500	350
Diagnosed with dementia*	250	500	350	400	150	400	1,450	250	350	250	850	250	600	50
Deliveries that are to teenage mothers	n/a	n/a	n/a	n/a	n/a	n/a	n/a	n/a	n/a	n/a	n/a	n/a	n/a	n/a

 20% worse than County Durham
 20% better than County Durham

Notes:

- sup - data suppressed due to small numbers
- n/a - comparison not available
- * - registered population that have been diagnosed
- ** - rounded to the nearest 10

Indicators correct as at January 2018. Some definitions may have changed from previous versions so no direct comparison is available.