

Purpose of this brief

1. This report outlines the latest release of Office for National Statistics (ONS) 2016 based population projections which describe future population growth from 2016 to 2041 that were released on Thursday 24th May 2018. The report is a supplement to the main projections report on County Durham – '**2016 ONS Population Projections Summary Report**'.
2. The figures quoted in this report cover the two Clinical Commissioning Groups (CCGs) in the county, namely the Durham Dales, Easington and Sedgefield group (DDES) and the North Durham group. Comparison figures for the county are also provided.

Using these data

3. These figures should be used as one of the key information sources to understand future population growth and demographic change in the CCGs in County Durham. ONS produce sub-national population projections at local authority and CCG level every two years. Because they are produced in consistent way across all local authority/CCG areas they are used as common framework informing local policy and planning across a number of different fields. These include:
 - Informing local planning of healthcare, education and other service provisions
 - Forming the basis for other products such as household projections
 - A basis for researchers and other organisations to produce their own projections
4. It should be noted that these data are not forecasts and do not attempt to predict the impact that any future policies, changing economic circumstances or other factors may have on local population change. They are, however, a reflection of what future population size and age structure would be realised if recent trends continue unchanged.

Key Messages

5. The overall population of County Durham is projected to grow by **3.0% (+15,600¹ people)** between 2016 and 2026 to **537,300 people**.
 - a. Both CCGs show similar growth over this period with the DDES CCG increasing by **3.1% (8,500 people)** and the North Durham CCG increasing by **2.8% (7,000 people)**.
6. Over the full projection period (2016 to 2041) the population of County Durham is projected to grow by **5.6% (+29,000 people)** rising from **521,800** to **550,800 people**.
 - a. Both CCG areas are projected to increase by **5.6%** (DDES **15,300 people**, North Durham **13,800 people**).

¹ The sum of the CCGs may not add up to the County total due to rounding. %'s use exact figures.

7. The number of pre-school children aged 0 to 4 is projected to decrease by **3.6%** (**1,000** fewer) by 2026 to 26,900 children and then to continue to fall until 2036 when it will show a small recovery increasing to **27,600** by 2041. Overall this is fall of **1.1%** over the period of the projections, a fall of **300** children.
 - a. DDESS CCG is predicted to fall by **3.6%** (**500** fewer children) by 2026 with the North Durham CCG falling by **3.5%** (**500** fewer children). By 2041, as across the county both CCGs will see these numbers recovering, however for the full projection period there still will be falls of **1.1%** and **1.0%** respectively.
8. The number of children and young people aged 5 to 17 are predicted to increase by **4.7%** (+3,400) by 2026 rising to **75,700** and then fall to **72,800** by 2041, an overall increase of only **0.6%** 2016 to 2041.
 - a. Both CCGs will increase by **4.7%**, in line with the county, by 2026 (increases of **1,900** and **1,500** respectively) with overall growth slowing by 2041 with overall increases of only **0.7%** and **0.6%** respectively, (increases of **300** and **200** respectively).
9. The number of working age people aged 18 to 64 will fall by **1.8%** (**-5,500**) by 2026 to **310,500** people and falling to **303,700** people by 2041, a fall of **3.9%**.
 - a. The DDES CCG will fall by **1.8%** (**2,900** fewer people) by 2026 and North Durham CCG will fall by **1.7%** (**2,600** fewer people). This trend will continue up to 2041 with falls of **4.3%** and **3.5%** respectively.
10. The number of people aged 65 and over will increase by **17.8%** (**+15,600**) by 2026 rising to **124,100** and then to **146,600** by 2041, an overall increase of **39.1%**.
 - a. Both CCGs will see a rise in this age group of **17.8%** (increases of **10,100** and **8,600** people respectively) by 2026 and continue to rise up to 2041 with increases of **39.0%** and **39.2%** respectively. By 2041 it is projected that the 65+ population will be **79,200** people in the DDES CCG and **67,400** in North Durham (2016: **57,000** and **48,500** respectively).
 - b. The proportion of the overall population aged 65 and over in the DDES CCG will increase from one in five people (20.8%) in 2016 to one in four people (27.3%) by 2041. North Durham CCG will increase just under one in six people (17.7%) in 2016 to nearly one in five people (23.3%) by 2041.
11. The 85 and over age group will increase by **26.8%** (**+3,300**) by 2026 rising to **15,400** people and will more than double in size by 2041 rising to **26,000** people ,an increase of **114.0%** (**+13,800** - from **12,200** in 2016).
 - a. Both CCGs will see similar rises in this age group of **26.8%** and **26.9%** (increases of **1,800** and **1,500** people respectively) by 2026 and continue to rise up to 2041 and more than doubling with increases of **113.3%** and **114.7%** respectively. By 2041 it is projected that the 85+ population will be **13,900** people in the DDES CCG and **12,000** in North Durham (2016: **6,500** and **5,600** respectively).

ONS 2016 based population projections for CCGs

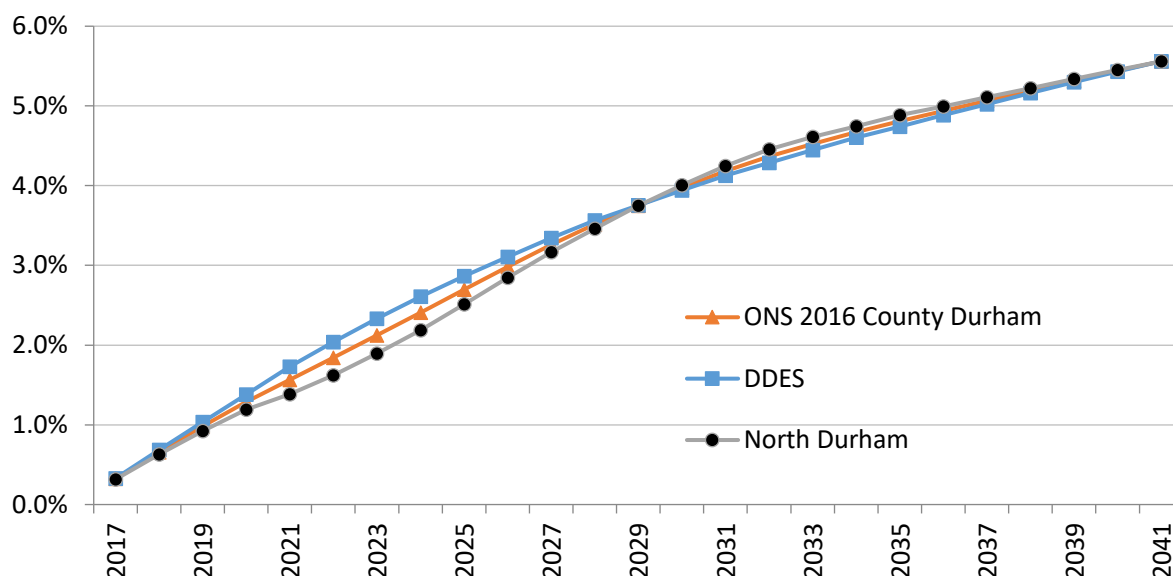
13. The latest release from ONS provides future population figures for each CCG, local authority and government office region in England, broken down by single year of age and covers a period from **2016 to 2041**. For information on these projections for County Durham please refer to the main report '2016 ONS population projections Summary report'.
14. For the DDES CCG, the projected population increase to **2026** is around **8,500** additional people, an increase of **3.1%** (Table 1 below). This rate of growth is similar to the county as a whole (**3.0%**) and just over half that in England (**5.9%**), but higher than projected growth across the North East (**1.9%**).
15. The North Durham CCG is projected to increase by around **7,000** people by 2026, an increase of **2.8%** (Table 1). This rate of growth is again similar to the county as a whole (**3.0%**) and just under half that in England (**5.9%**), but higher than projected growth across the North East (**1.9%**). This imbalance in growth rates reflects the continuing trend of relatively high levels of population growth concentrated in London and the South East.
16. Over the longer term ONS project the DDES CCG to grow by **15,300 people by 2041** equivalent to a **5.6%** increase from a 2016 base. The North Durham CCG is projected to grow by **13,800** people, a rise of **5.6%** from a 2016 base.

Table 1: ONS 2016 projected change from 2016 for 2026 and 2041 by CCG

	Percentage change by 2026						
	2016	2026	Change from 2016	% change from 2016	2041	Change from 2016	% change from 2016
DDES	274,400	282,900	8,500	3.1%	289,700	15,300	5.6%
North Durham	247,400	254,400	7,000	2.8%	261,100	13,800	5.6%
County Durham	521,800	537,300	15,600	3.0%	550,800	29,000	5.6%

Source: ONS 2016 Population Projections. Figures round to nearest 100.

Figure 1: Projected population change by CCG (2017 to 2041) from a 2016 base year



Source: ONS 2016 Sub-national Population Projections

Population change by age group

17. Children and young people aged 0 to 17: In the DDES CCG the 0-17 age group will increase by **2.4%** by 2026, but will only increase by **0.2%** over the whole projection period. Similarly this age group will increase in the North Durham CCG by **2.3%**, falling to a **0.2%** increase over the projection period. Below is a further breakdown of this age group:

- **Children aged 0 to 4:** This age group is predicted to fall by **3.6% (-500)** by 2026 in the DDES CCG and fall by **3.5% (-500)** in North Durham. These falls will continue until around 2034 and then both CCGs will show some recovery with overall falls of only **1.1%** and **1.0%** respectively by 2041 (from a 2016 base).
- **Children aged 5 to 17:** This age group will increase in both CCGs by **4.7%** by 2026, (increases of **1,900** and **1,500** respectively). However, the projections show that the bulk of this increase is between 2016 and 2023, with this age group falling over the remaining duration of the projections (see charts below). Over the full projection period this age group will increase by only **0.7%** in the DDES CCG (**300** increase) and **0.6%** (**200** increase) in the North Durham CCG.
- Corresponding figures 0 to 4 and 5 to 17 year olds for County Durham show that the 0 to 4 age group is predicted to fall by **1.1%** while those aged 5 to 17 will increase by **0.6%**.

18. Working age people aged 18 to 64: This group shows a consistent decline over the projection period with falls of **1.8%** and **1.7%** for each CCG by 2026 and **4.3%** and **3.5%** by 2041 (from a **2016** base). This age group will see falls across the CCGs of **7,100** and **5,300** people, respectively, by 2041. A similar pattern is seen across the county with falls of **1.8%** and **3.9%** for 2026 and 2041, which is in contrast to that across England where this age group is predicted to continue to increase with a **1.9%** increase by 2026 and an increase of **3.3%** by 2041 (both from a 2016 base).

19. **People aged 65 and over:** The predictions across the CCGs for the older people age groups are similar to that across the county, region and nationally for the projection period. People aged 65 and over are predicted to increase by **17.8%** across the CCGs (increases of **10,100** in DDES and **8,600** in North Durham) by 2026 and by **39.0%/39.2%** by 2041, increases of **22,200** and 19,000 people respectively.
20. **People aged 85 and over:** This age group will see the largest percentage increase over the projection period with this group more than doubling in size by 2041 with an increase of **113.3%** in DDES, rising from **6,500** people to **13,900** by 2041 and an increase of **114.7%** in North Durham, rising from **5,600** people to **12,000** by 2041. Further details are provided in the tables and figures below.

Table 2a: Projected population change by main age groups in the CCGs and County Durham 2016 to 2026

	Percentage change by 2026								
	DDES			North Durham			County Durham		
	2016 Base	2026 Count	% change from 2016	2016 Base	2026 Count	% change from 2016	2016 Base	2026 Count	% change from 2016
0-4	15,000	14,500	-3.6%	12,900	12,400	-3.5%	27,900	26,900	-3.6%
5-17	39,700	41,600	4.7%	32,600	34,100	4.7%	72,300	75,700	4.7%
18-64	162,700	159,800	-1.8%	153,400	150,800	-1.7%	316,100	310,500	-1.8%
65+	57,000	67,100	17.8%	48,500	57,100	17.8%	105,400	124,100	17.8%
85+	6,500	8,300	26.8%	5,600	7,100	26.9%	12,100	15,400	26.8%
All People	274,400	282,900	3.1%	247,400	254,400	2.8%	521,800	537,300	3.0%

Source: ONS 2016 Population Projections. Figures round to nearest 100.

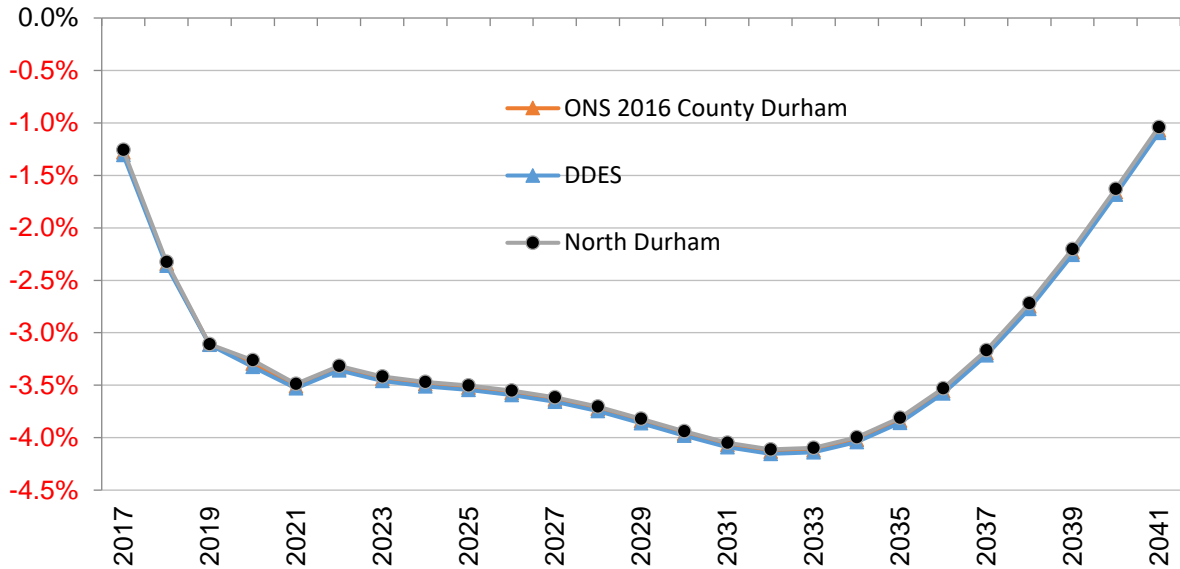
Table 2b: Projected population change by main age groups in the CCGs and County Durham 2016 to 2041

	Percentage change by 2041								
	DDES			North Durham			County Durham		
	2016 Base	2041 Count	% change from 2016	2016 Base	2041 Count	% change from 2016	2016 Base	2041 Count	% change from 2016
0-4	15,000	14,900	-1.1%	12,900	12,800	-1.0%	27,900	27,600	-1.1%
5-17	39,700	40,000	0.7%	32,600	32,800	0.6%	72,300	72,800	0.6%
18-64	162,700	155,600	-4.3%	153,400	148,100	-3.5%	316,100	303,700	-3.9%
65+	57,000	79,200	39.0%	48,500	67,400	39.2%	105,400	146,600	39.1%
85+	6,500	13,900	113.3%	5,600	12,000	114.7%	12,100	26,000	114.0%
All People	274,400	289,700	5.6%	247,400	261,100	5.6%	521,800	550,800	5.6%

Source: ONS 2016 Population Projections. Figures round to nearest 100.

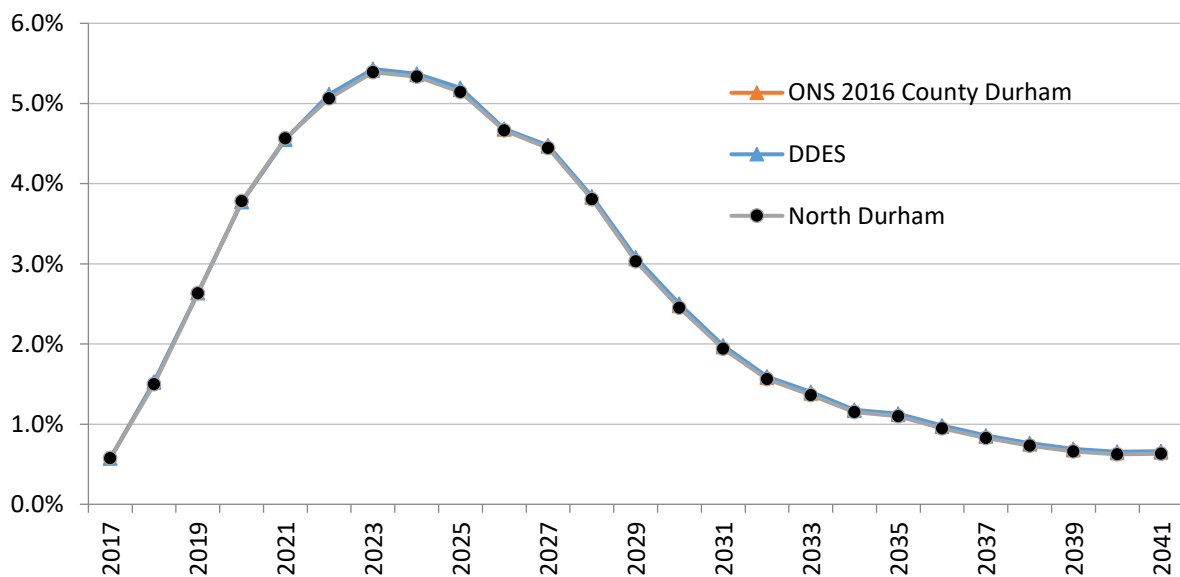
Note: The charts below by age group show a similar pattern of change for each area (both CCGs and the county), however they have been included in this report to highlight the pattern of change over the projection period 2016 to 2041.

Figure 3a: Percentage change by CCG and County Durham (2016 to 2041) in the 0-4 age group



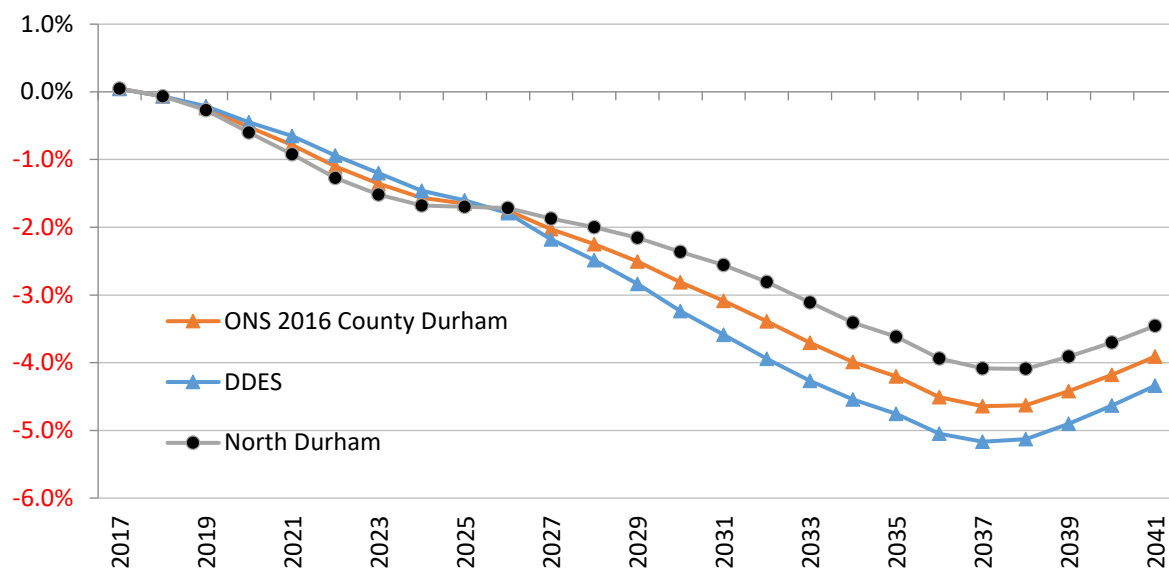
Source: ONS 2016 Sub-national Population Projections

Figure 3b: Percentage change by CCG and County Durham (2016 to 2041) in the 5-17 age group



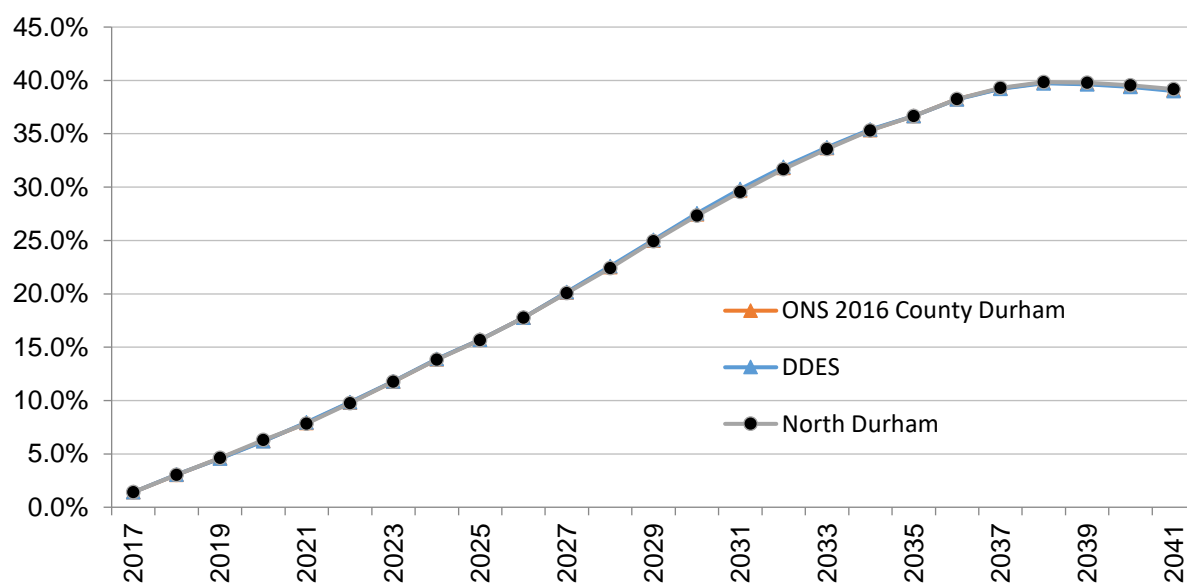
Source: ONS 2016 Sub-national Population Projections

Figure 3c: Percentage change by CCG and County Durham (2016 to 2041) in the 18-64 age group



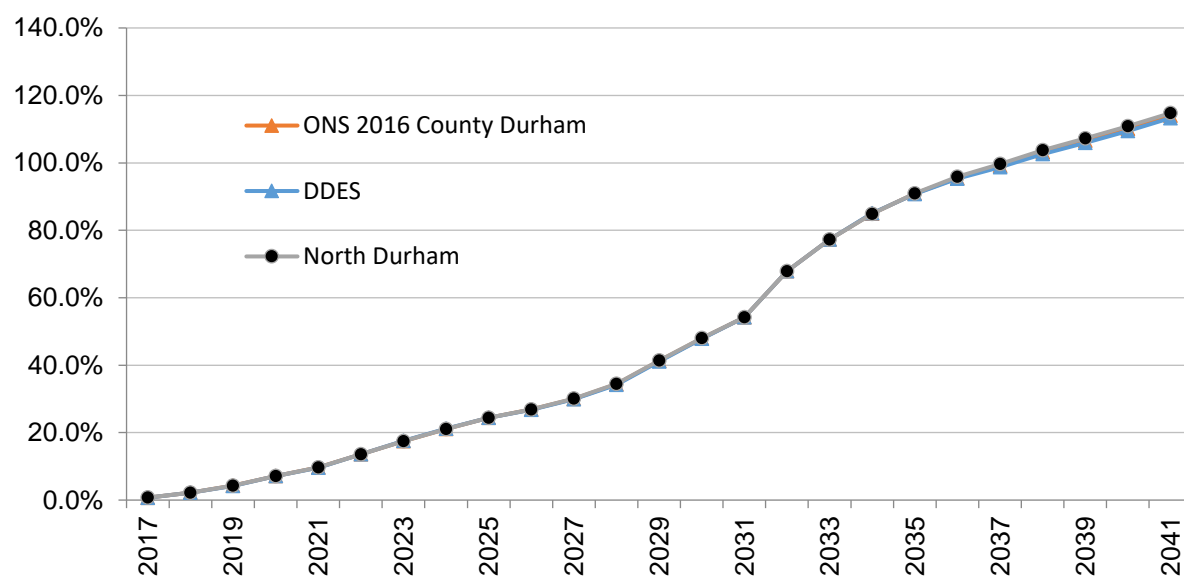
Source: ONS 2016 Sub-national Population Projections

Figure 3d: Percentage change by CCG and County Durham (2016 to 2041) in the 65+ age group



Source: ONS 2016 Sub-national Population Projections

Figure 3e: Percentage change by CCG and County Durham (2016 to 2041) in the 85+ age group



Source: ONS 2016 Sub-national Population Projections

Useful links:

ONS: <http://www.ons.gov.uk/peoplepopulationandcommunity/populationandmigration>

DurhamInsight: www.durhaminsight.info

Contact: Research and Public Health Intelligence Team **Tel:** 03000 268032
Email: ina@durham.gov.uk
