

ONS 2016 Population Projections: County Durham Summary



Purpose of this brief

1. This briefing note outlines the latest release of Office for National Statistics (ONS) 2016 based population projections which describe future population growth from 2016 to 2041 that were released on Thursday 24th May 2018.

Using these data

2. These figures should be used as one of the key information sources to understand future population growth and demographic change in County Durham. ONS produce sub-national population projections at local authority level every two years. Because they are produced in consistent way across all local authority areas they are used as common framework informing local policy and planning across a number of different fields. These include:
 - Informing local planning of healthcare, education and other service provisions
 - Forming the basis for other products such as household projections
 - A basis for researchers and other organisations to produce their own projections
3. It should be noted that these data are not forecasts and do not attempt to predict the impact that any future policies, changing economic circumstances or other factors may have on local population change. They are, however, a reflection of what future population size and age structure would be realised if recent trends continue unchanged.

Key Messages

4. **The overall population of County Durham is projected to grow by 3.0% (+15,600 people) between 2016 and 2026 to 537,300 people.** This is lower than the 3.8% predicted in the 2014 SNPP during this period (+21,800 people). This projected growth is higher than the growth expected in the North East (1.9%/ +50,500), but lower than in England (5.9%/ +3.238m).
5. **Over the full projection period (2016 to 2041) the population of County Durham is projected to grow by 5.6% (+29,000 people) rising from 521,800 to 550,800 people.** This projected growth is higher than the growth expected in the North East (3.2%/ +83,900), but is lower than predicted in England (12.1%/ +6.684m).
6. **The number of pre-school children aged 0 to 4 is projected to decrease by 3.6% (1,000 fewer) by 2026 to 26,900 children and then to continue to fall until 2036 when it will show a small recovery increasing to 27,600 by 2041. Overall this is fall of 1.1% over the life of the projections, a fall of 300 children.** Across England there will be a 1.4% fall (-49,600) by 2041.
7. **The number of children and young people aged 5 to 17 are predicted to increase by 4.7% (+3,400) by 2026 rising to 75,700 and then fall to 72,800 by 2041, an overall increase of only 0.6% 2016 to 2041.** Across England this age group will increase by 6.1% (+509,000).

8. The number of working age people aged 18 to 64 will fall by **1.8% (-5,500)** by 2026 to **310,500 people** and falling to **303,700 people** by 2041, a fall of **3.9%** between 2016 and 2041. Across England this group is predicted to increase by 3.3% (+1.114m) by 2041.
9. The number of people aged 65 and over will increase by **17.8% (+15,600)** by 2026 rising to **124,100** and then to **146,600** by 2041, an overall increase of **39.1%**. Across England this group is predicted to increase by 51.7% (a rise of +5.111m) by 2041.
10. The proportion of the overall population aged 65 and over in County Durham will increase from one in five people (20.2%) in 2016 to one in four people (26.6%) by 2041.
11. The 85 and over age group will increase by **26.8% (+3,300)** by 2026 rising to **15,400 people** and will more than double in size by 2041 rising to **26,000 people**, an increase of **114.0% (+13,800 - from 12,200 in 2016)**. Across England this growth is predicted to be slightly lower at 107.8% (+1.432m) by 2041.
12. Positive net migration remains the main driver behind population growth in the county even though projections of this have been reduced over the last few iterations of projections.

ONS 2016 based population projections

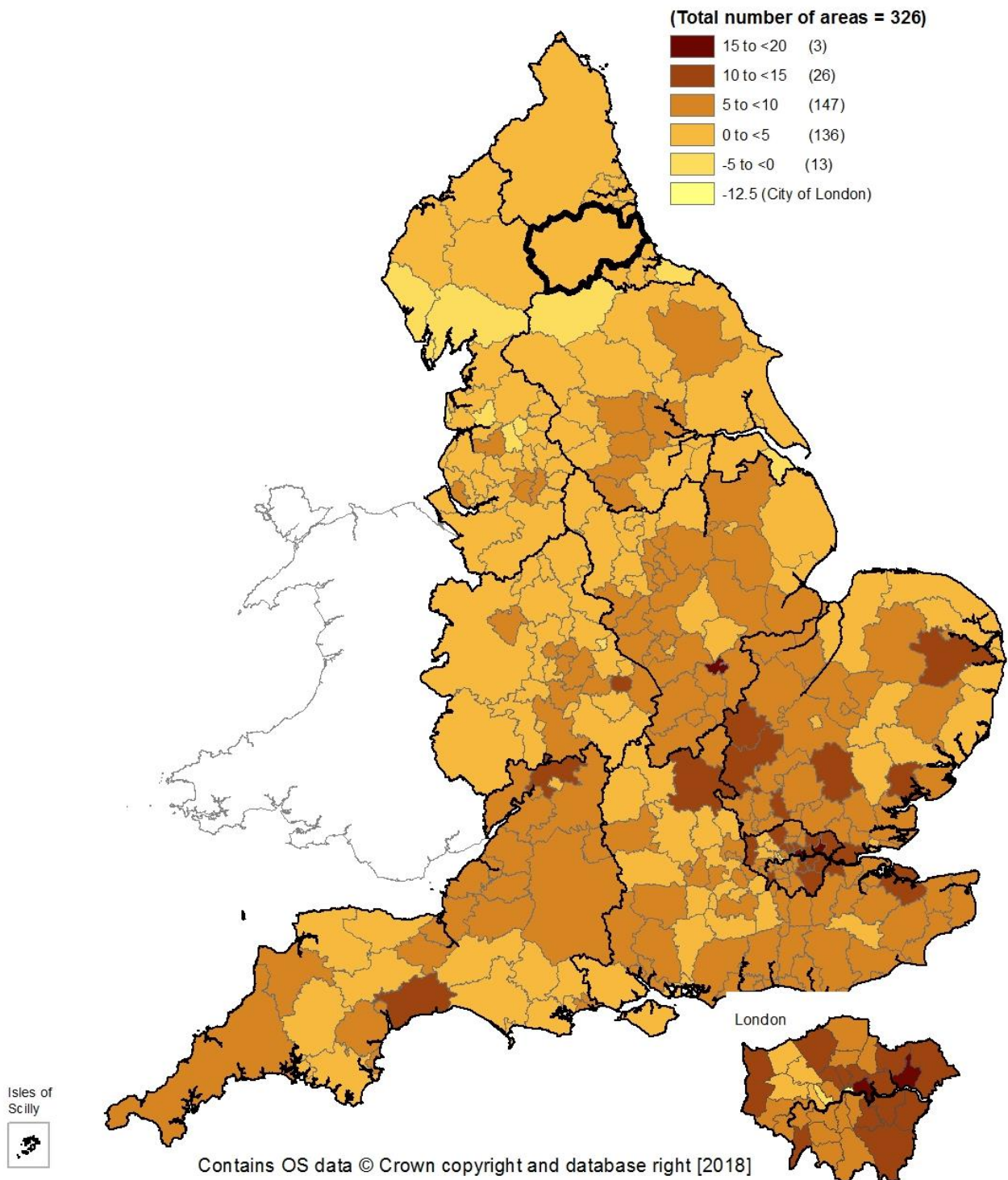
15. The latest release from ONS provides future population figures for each local authority and government office region in England, broken down by single year of age and covers a period from **2016 to 2041**.
16. For County Durham, the projected population increase to **2026** is around **15,600**, an increase of **3.0%** (Table 1). This rate of growth is just over half that in England (+5.9%), but higher than projected growth across the North East (1.9%). This imbalance in growth rates reflects the continuing trend of relatively high levels of population growth concentrated in London and the South East (Map 1).
17. Over the longer term ONS project the County Durham population to grow by **29,000 people by 2041** equivalent to a **5.6%** increase from a **2016** base. This rate of growth is just under half the rate of growth in England (+12.1%) but higher than growth projected across the North East (+3.2%).

Table 1: ONS 2016 projected change from 2016 for 2026 and 2041

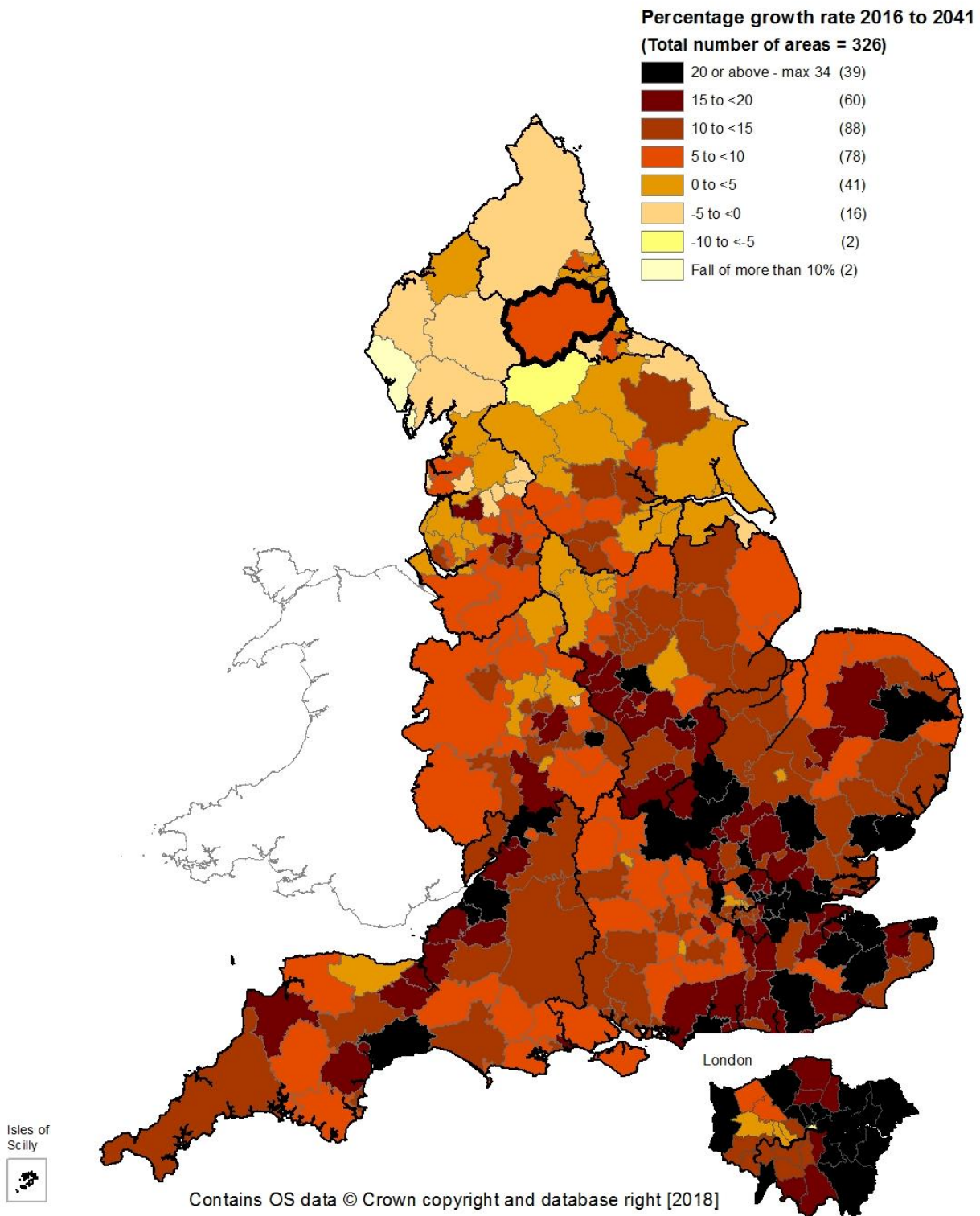
	2016 base year	2016 ONS Projections			
		2026		2041	
		Count	% change from 2016	Count	% change from 2016
County Durham	521,800	537,300	3.0%	550,800	5.6%
North East	2,636,600	2,687,100	1.9%	2,720,400	3.2%
England	55,268,100	58,505,600	5.9%	61,952,100	12.1%

18. While these trends indicate some local growth, they also show that, because of much stronger growth elsewhere, County Durham's share of England's population overall is falling. Over the course of projections from 2008 to 2016 the county's share of England's population has fallen from **0.93** to **0.91** (using 2033 as the latest year that is covered by the projection series). The following maps illustrate the change in population for local authorities across England for the periods 2016/2026 and 2016/2041.

Map 1: Projected population growth (%) by local authorities in England, mid-2016 to mid-2026

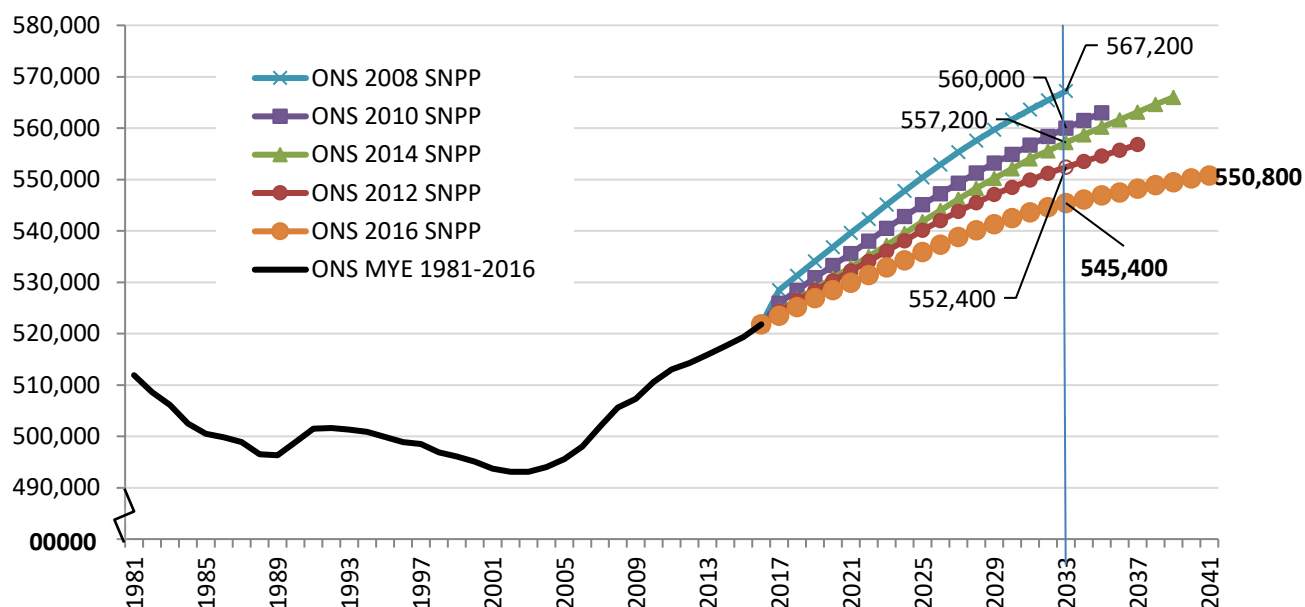


Map 2: Projected population growth (%) by local authorities in England, mid-2016 to mid-2041



19. This growth is lower than that projected in previous releases from the ONS. The ONS **2008 based (+5.1%)** and **2010 based (+4.6%)** population projections for the county both showed higher levels of population growth between **2016 and 2026 (2016 shows growth of 3.0%)**. However, it should be noted that ONS continue to project strong levels of continued population growth compared to trends overall since 1981. Figure 1 contains all recent projections for comparison as well as ONS population estimates stretching back to 1981 for context.

Figure 1: County Durham historic and projected population change (1981 to 2041)



Source: ONS Mid-year Estimates 1981 to 2014; 2008 to 2016 Sub-national Population Projections

20. In many local authorities the 2016 SNPPs are lower than they were in the 2014 SNPPs. Of the **326** authorities in the 2016 dataset, **253** are predicted to have lower population projections by 2039 than in the 2014 dataset, (from a 2016 base year and 2016-2039 being the overlap period of the 2014 and 2016 SNPPs), with the projection for County Durham being **2.7%** lower, (and England being **2.8%** lower), in 2039. The charts below illustrate these differences in the county.

Figure 2a: Comparison between the 2014 SNPP and 2016 SNPP projections – Total Population 2017 to 2039 in County Durham

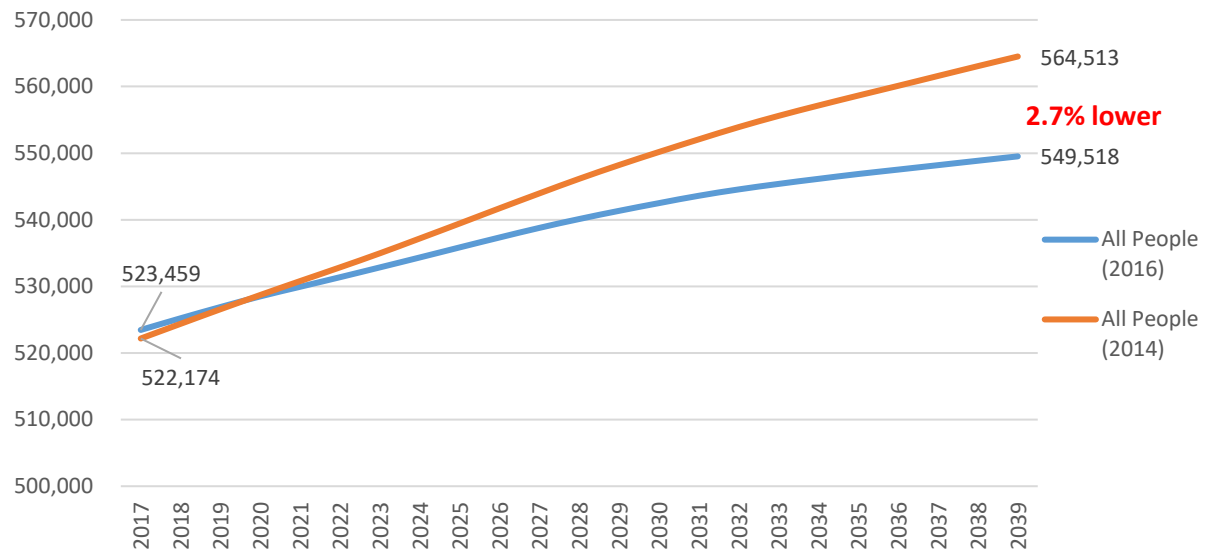
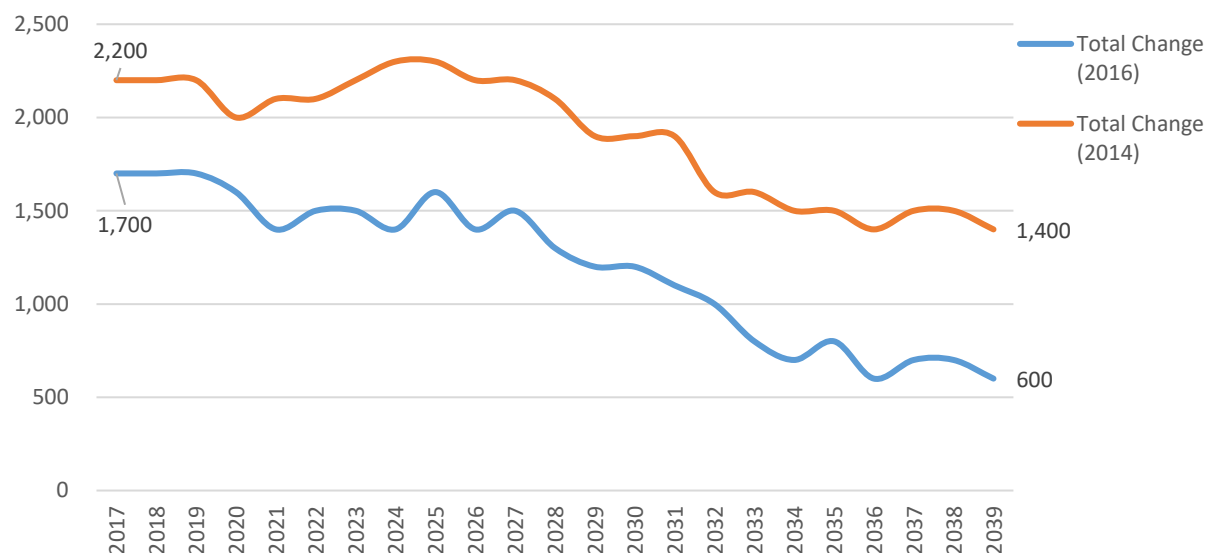


Figure 2b: Comparison between the 2014 SNPP and 2016 SNPP projections – Change per annum 2017 to 2039 in County Durham



Source: ONS Mid-year Estimates 1981 to 2014; 2008 to 2016 Sub-national Population Projections

Population change by age group

21. **Children and young people aged 0 to 17:** The ONS projections for the county indicate that the growth in the number of children and young people will continue to grow all be it more slowly than indicated by previous SNPPs. This is due to mainly changes on the 0-4 age group. The 0-17 age group will increase by **2.4%** by 2026, but will only increase by **0.2%** over the whole projection period. Growth across England continues to rise over this period with **5.9%** growth by 2026 and **3.9%** growth between 2016 and 2041. Below is a further breakdown of this age group:

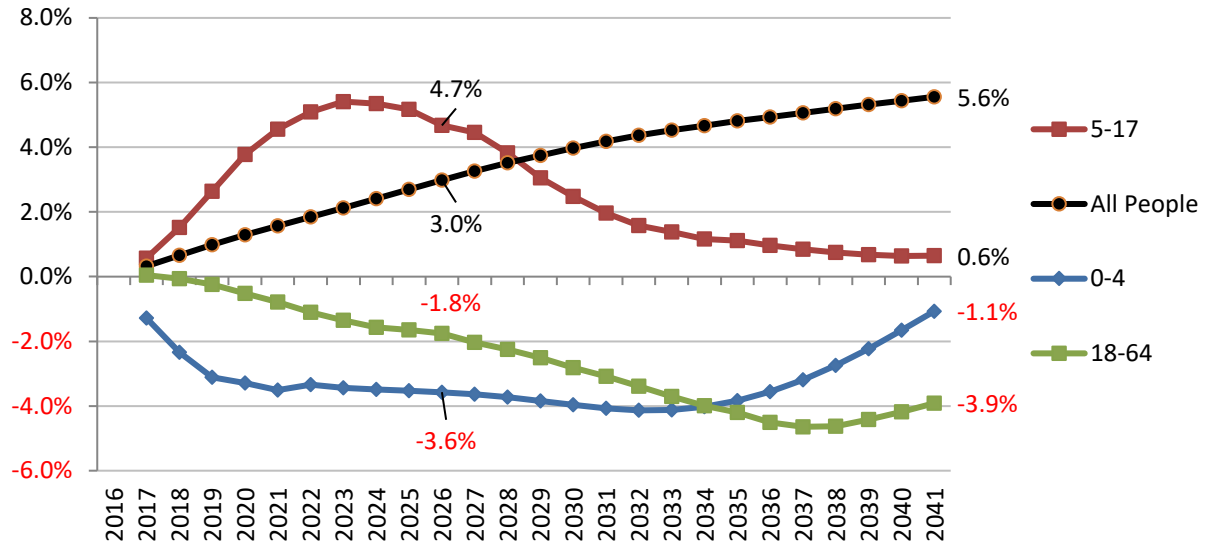
- Within this age group the number of children age 0 to 4 is predicted to fall by **3.6% (-1,000) by 2026** from 27,900 to 26,900 and then recover slightly by 2041 with an overall fall of **1.1% (-300)**, over the whole projection period. There are greater falls predicted across the North East of **6.7%** for children aged 0 to 4 by 2041 while across England this age group is predicted to fall by **1.4%**.
 - Children and young people aged 5 to 17 will increase **4.7 % (3,400)** by 2026 falling back to an increase of only **0.6% (500)** over the projection period. Across the North East those aged 5 to 17 are predicted to fall by **2.7%** by 2041.
 - Corresponding figures 0 to 4 and 5 to 17 year olds for England Show that the 0 to 4 age group is predicted to fall by **1.4%** while those aged 5 to 17 will increase by **3.9%**.
22. **Working age people aged 18 to 64:** This group shows a consistent decline over the projection period with falls of **1.8% by 2026** and **3.9% by 2041** (from a **2016** base) in the county and falls **3%** and **5.9%** across the region respectively. This is in contrast to that across England where this age group is predicted to continue to increase with a 1.9% increase by 2026 and an increase of 3.3% by 2041 (both from a 2016 base).
23. **People aged 65 and over:** The predictions across the older people age groups are similar across the county, region and nationally for the projection period. People aged 65 and over are predicted to increase by **17.8% (+18,700) by 2026** and by **39.1% by 2041** an increase of **41,200** people in the county, (regional increase of 39.3%/199,300 people; England increase of 51.7%/5.111 million by 2041).
24. **People aged 85 and over:** This age group will see the largest percentage increase over the projection period with this group more than doubling in size by 2041 with an increase of **114% rising from 12,100 people to 26,000**. This percentage increase is greater than that across the North East and England (102.9% and 107.8% respectively). Further details are provided in tables 2 and 3 below and figures 3a and 3b below.

Table 2: Projected population change by main age groups in County Durham 2016 to 2026 and 2041

	2016 Base	2016 ONS Projections			
		2026		2041	
		Count	% change from 2016	Count	% change from 2016
0-4	27,900	26,900	-3.5%	27,600	-1.0%
5-17	72,300	75,700	4.7%	72,800	0.7%
18-64	316,100	310,500	-1.8%	303,700	-3.9%
65+	105,400	124,100	17.8%	146,600	39.1%
85+	12,100	15,400	27.3%	26,000	114.8%
All People	521,800	537,300	3.0%	550,800	5.6%

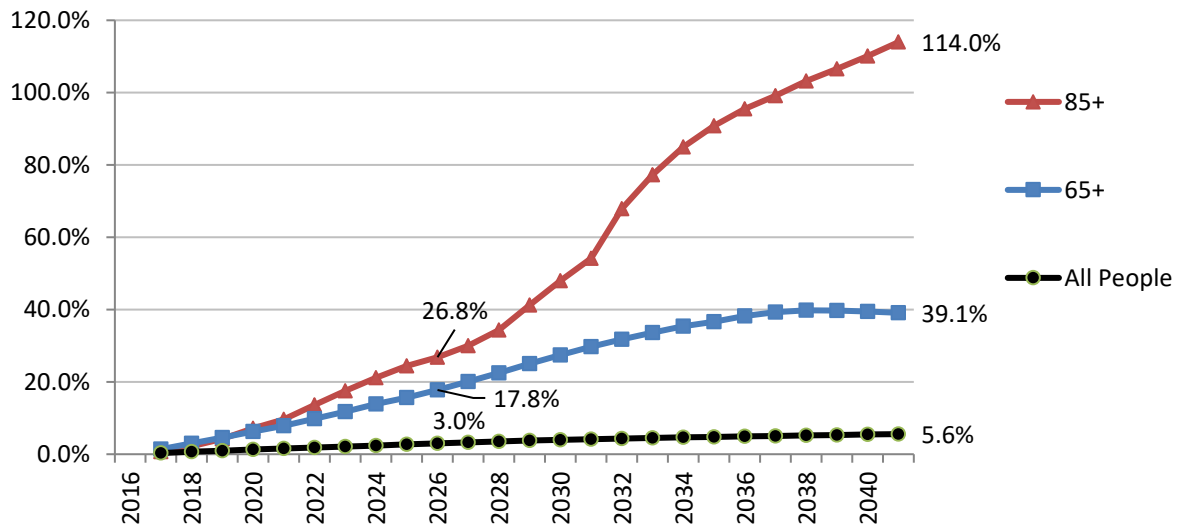
Source: ONS 2016 Population Projections. Figures rounded to the nearest 100.

Figure 3a: Percentage change by age group (2016 to 2041) in County Durham: people aged under 65 years of age



Source: ONS 2016 Sub-national Population Projections

Figure 3b: Percentage change by age group (2016 to 2041) in County Durham: people aged 65 and over and 85 and over



Source: ONS 2016 Sub-national Population Projections

Table 3: Projected population change by main age groups: county, regional and national comparisons between 2016 and 2041

	2016 ONS Projections (000's)								
	County Durham			North East			England		
	2016 base year	2041	% change from 2016	2016 base year	2041	% change from 2016	2016 base year	2041	% change from 2016
0-4	27.9	27.6	-1.1%	148.4	138.5	-6.7%	3,429.0	3,379.5	-1.4%
5-17	72.3	72.8	0.7%	377.3	367.1	-2.7%	8,356.2	8,865.3	6.1%
18-64	316.1	303.7	-3.9%	1,603.4	1,508.0	-5.9%	33,599.9	34,713.8	3.3%
65+	105.4	146.6	39.1%	507.6	706.9	39.3%	9,882.8	14,993.6	51.7%
85+	12.1	26.0	114.9%	62.6	127.0	102.9%	1,328.1	2,759.6	107.8%
All People	521.8	550.8	5.6%	2,636.6	2,720.4	3.2%	55,268.1	61,952.1	12.1%

Source: ONS 2016 Population Projections.

Components of change

25. Population growth and demographic change is best understood as the result of a combination of two factors; natural change and migration. Natural change describes the change in an area as a result of the number of births minus the number of deaths. Migration describes the difference between people moving into the county from other parts of the country and from international points of origin and those who leave the county during the same period.
26. ONS projections have undergone revisions as methodological weaknesses have been explored over recent years in both ONS population estimation and projection work. Much of the revision is related to the measurement of international migration but also updating assumptions using latest administrative and census data.
27. It is important to note that both internal and international migration flows record the movement of individuals from one place to another regardless of nationality. Both internal and international migrants may have differing national identities and include UK nationals returning to the UK after living abroad.
28. Over the course of time it is possible that people will move from being internal to international migrants and vice versa. For example an individual may move into the UK from abroad in one year and then move elsewhere in the UK the next year becoming an internal migrant.
29. The latest projections are lower than the 2014 SNPP across the projection period to 2039 and are **0.8%** lower by 2026 and **2.7%** lower by 2039.
30. These latest projections show a marked projected fall in net natural change (births minus deaths) over the course of the projections. However, this is offset by positive net migration, both in internal and international migration, even though projections are lower for international migration than that predicted in the 2014 SNPP. The 2016 ONS SNPP shows that projected total net migration levels are estimated to be similar to those in the 2014 SNPP by 2026 but **5.6%** lower by 2039 as shown in table 4 below.

Table 4: Cumulative components of change in County Durham 2026 and 2039 from the 2014 and 2016 SNPP

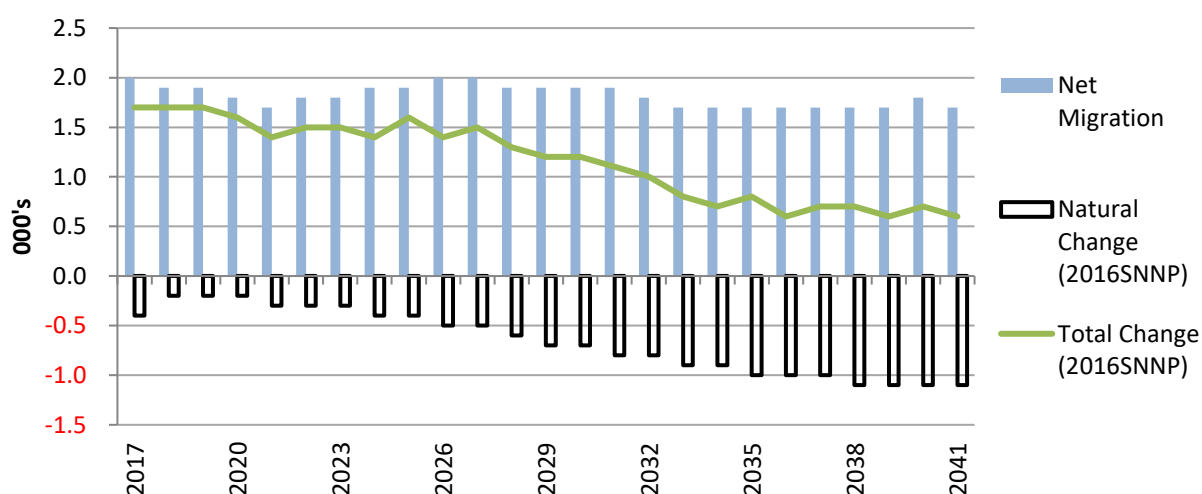
Component of change	Change by 2026 and 2039 (from 2016 base year)					
	Projections				% change from 2014 projections	
	2014		2016		2016	
	2026	2039	2026	2039	2026	2039
Natural change	3.8	1.9	-3.2	-14.3	-184.2%	-852.6%
Total net migration	20.7	44.5	20.7	42.0	0.0%	-5.6%
Internal net migration	9.3	20.4	9.3	29.2	0.0%	43.1%
International net migration	12.3	25.3	12.3	14.6	0.0%	-42.3%
Cross Border Net migration	-0.2	-0.2	-0.2	0.0	-	-
Overall Change	45.9	46.4	38.9	27.7	-15.3%	-40.3%

Source: ONS mid-2014 to 2016 population projections – components of change

Note: The 2014 projections covered 2014 to 2039 and the 2016 projections cover the period 2016 to 2041.

31. Table 4 above hides the fact that internal migration flows (in and out) are much higher than international migration flows although they appear to contribute fairly evenly to overall population growth. This is significant given that internal migration flows are predicted to be ten times higher on average than international flows over the course of the projection period.
32. On average it is predicted that net population change will add **1,200** additional people per annum to the county's population over the projection period. These predicted changes in population, migration and natural change are summarised in figure 4 below.

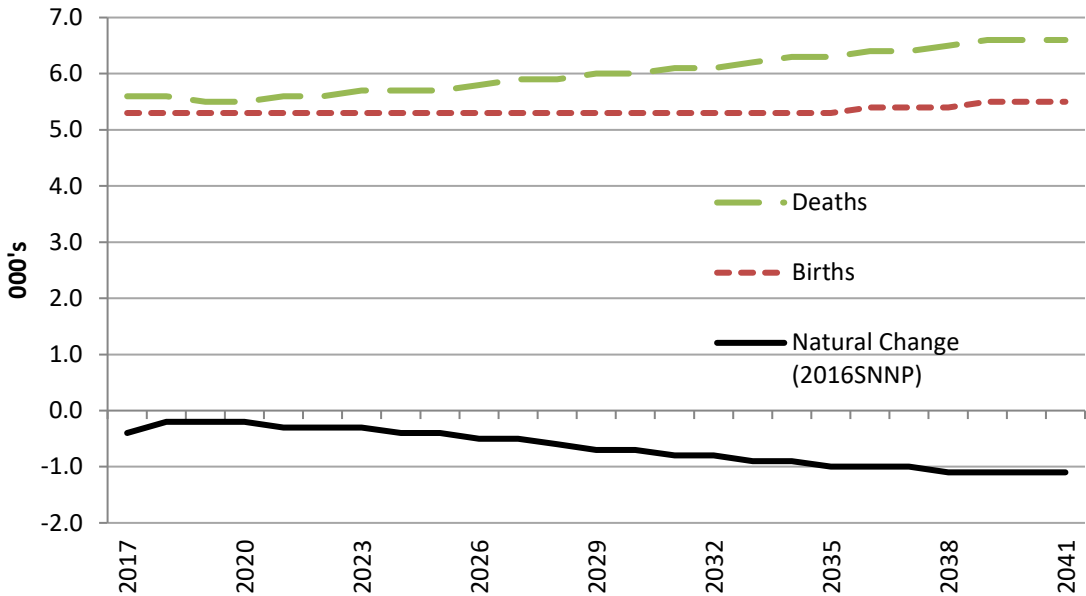
Figure 4: Components of change in County Durham 2017 to 2041



Source: ONS 2016 Sub-national Population Projections – Components of Change

33. By 2026 natural change will remove **3,200** people from the county’s population. This trend is predicted to continue up to 2041 by which time natural change is predicted to have removed **16,500** people from the predicted population of the county. These changes are illustrated in figure 5 below.

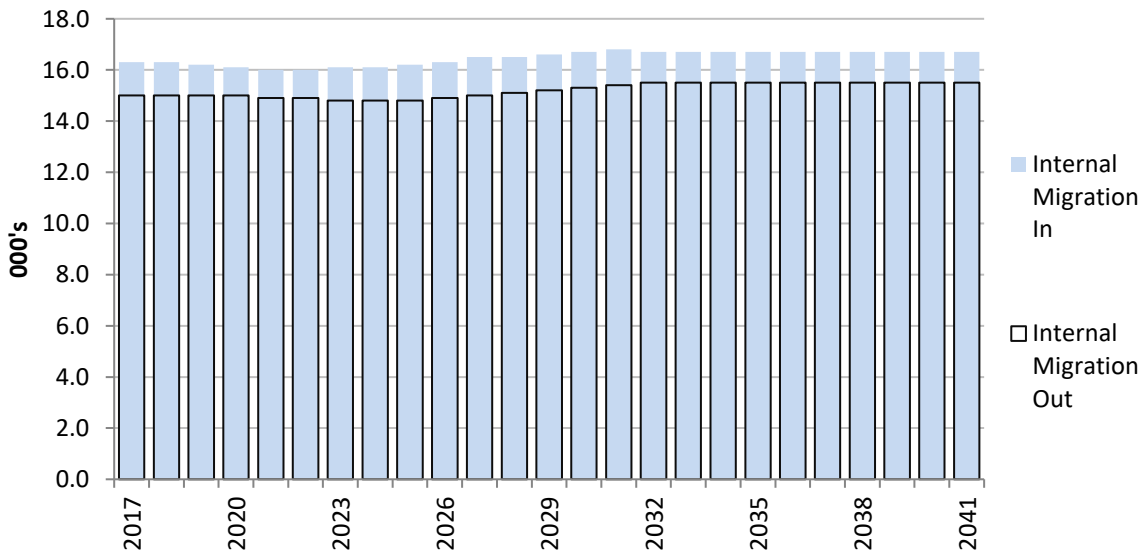
Figure 5: Natural change in County Durham 2016 to 2041



Source: ONS 2016 Sub-national Population Projections – Components of Change

34. Net internal migration is predicted to remain positive between 2016 and 2041 and will contribute an additional **31,600** people to the county’s population by 2041. These additional people will represent **5.3%** of the total population in County Durham by 2041. The differences in the components of change making up internal migration and their contribution to overall change are detailed in figure 6 below.

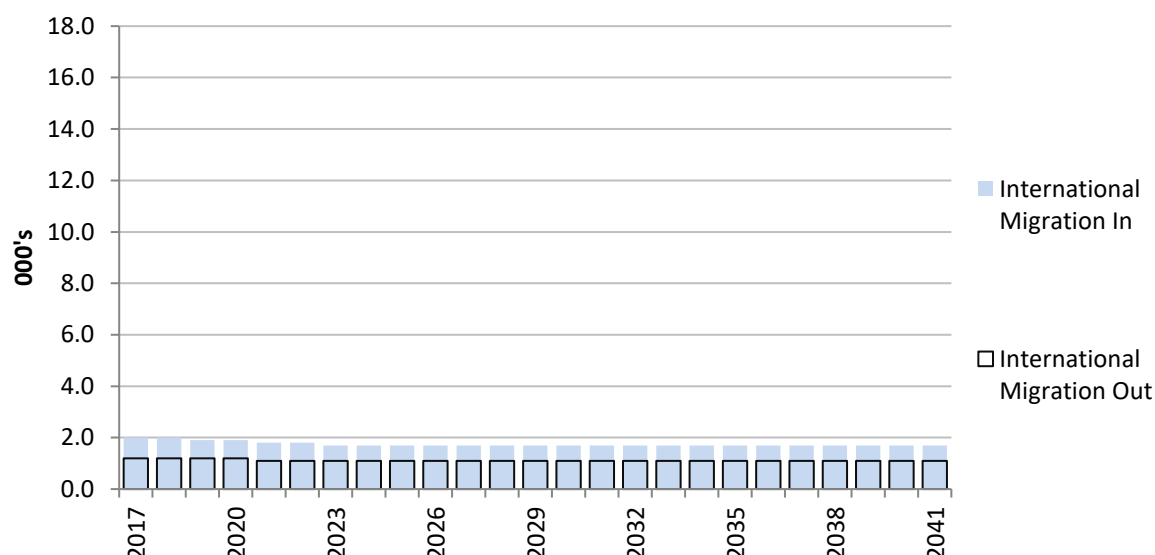
Figure 6: Internal migration change in County Durham 2016 to 2041



Source: ONS 2016 Sub-national Population Projections – Components of Change

35. Although flows in international migration are lower than those seen in internal migration, this component is predicted to steadily add to the resident population of the county, year on year up to 2041. This component will contribute an additional **15,800** people to the county's population by 2041. These additional people will represent **2.9%** of the total population in County Durham by 2041. However, it should be noted that migration into County Durham is low compared to other parts of England
36. Throughout the projection the levels of international migration are relatively static at an average of **600 people per annum**. These changes are detailed in figure 6 below and also show the differences in scale between internal and international migration flows.

Figure 6: International migration change in County Durham 2016 to 2041



Source: ONS 2016 Sub-national Population Projections – Components of Change

Useful links:

ONS: <http://www.ons.gov.uk/peoplepopulationandcommunity/populationandmigration>

DurhamInsight: www.durhaminsight.info

Contact: Research and Public Health Intelligence Team **Tel:** 03000 268032
Email: ina@durham.gov.uk
