

# ONS 2018 Population Projections:



## Contents

Purpose of this factsheet .....	1
Why is this important? .....	1
Key Messages .....	2
ONS 2018 based population projections .....	2
Change by English Upper Tier and Unitary Local Authority .....	4
Population change by age group .....	8
Children and young people aged 0 to 17 .....	8
Working age people aged 18 to 64: .....	9
People aged 65 and over .....	9
People aged 85 and over .....	9
Components of change .....	12
Links .....	15

## Purpose of this factsheet

1. This factsheet outlines the latest release of Office for National Statistics (ONS) 2018 based population projections which describe future population growth from 2018 to 2043 that were released on Wednesday 25<sup>th</sup> March 2020.

## Why is this important?

2. These figures should be used as one of the key information sources to understand future population growth and demographic change in County Durham. ONS produce sub-national population projections at local authority level every two years. Because they are produced in consistent way across all local authority areas they are used as common framework informing local policy and planning across several different fields. These include:
  - Informing local planning of healthcare, education and other service provisions
  - Forming the basis for other products such as household projections
  - A basis for researchers and other organisations to produce their own projections
3. It should be noted that these data are not forecasts and do not attempt to predict the impact that any future policies, changing economic circumstances or other factors may have on local population change. They are; however, a reflection of what future population size and age structure would be if recent trends continue unchanged.

## Key Messages

4. **The overall population of County Durham is projected to grow by 3.7% (+19,500 people) between 2018 and 2028 rising to 546,500 people.** This is higher than the 2.8% predicted in the 2016 SNPP during this period (+14,900 people). This projected growth is higher than the growth expected in the North East (2.3%/ +61,300), but lower than in England (5%/ +2.774m).
5. **Over the full projection period (2018 to 2043) the population of County Durham is projected to grow by 6.6% (+34,500 people) rising from 527,000 to 561,500 people.** This projected growth is higher than the growth expected in the North East (4.1%/ +109,200) but is lower than predicted in England (10.3%/ +5.767m).
6. **The number of pre-school children aged 0 to 4 is projected to decrease by 6.7% (1,800 fewer) from 27,000 by 2028 falling to 25,200 and then to continue to fall until 2040 when it will show a small recovery increasing to 27,600 by 2043. Overall, this is an increase of 2% over the life of the projections, a rise of 500 children.** Across England there will be a 1.1% rise (+35,400) by 2043.
7. **The number of children and young people aged 5 to 17 are predicted to increase by 2.2% (+1,700) by 2028 rising to 75,700 and then fall to 72,800 by 2043, an overall decrease of only 1.7% 2018 to 2043.** Across England this age group is predicted to remain stable with only a 0.1% decrease over the projection period.
8. **The number of working age people aged 18 to 64 is predicted to remain relatively stable and only fall by 0.2% by 2028 falling to 316,700 people then falling to 315,300 people by 2043, a fall of 0.6% between 2018 and 2043.** Across England this group is predicted to increase by 3.5% (+1.192m) by 2043.
9. **The number of people aged 65 and over will increase by 18.7% (+20,300) by 2028 rising to 128,900 and then to 145,900 by 2043, an overall increase of 34.3%.** Across England this group is predicted to increase by 44.7% (a rise of +4.548m) by 2043.
10. The proportion of the overall population aged 65 and over in County Durham is predicted to increase from one in five people (20.6%) in 2018 to one in four people (26%) by 2043.
11. **The 85 and over age group will increase by 22.7% (+2,800) by 2028 rising to 15,100 people and will nearly double in size by 2043 rising to 23,700 people, an increase of 92.8% (+11,400 - from 12,300 in 2018).** Across England this growth is predicted to be slightly lower at 87.4% (+1.192m) by 2043.
12. Positive net migration remains the driver behind population growth in the county even though projections of this have been reduced over the last few iterations of projections.
13. Natural change (births minus deaths) is predicted to remain negative, (more deaths than births), over the entire projection period.

## ONS 2018 based population projections

15. The latest release from ONS provides future population figures for each local authority and government office region in England, broken down by single year of age and covers a period from **2018 to 2043**.
16. For County Durham, the projected population increase to **2028** is around **19,500**, an increase of **3.7%** (Table 1). This rate of growth is less than the predicted growth in England (+5%), but higher than projected growth across the North East (2.3%). This imbalance in growth rates reflects the continuing trend of relatively high levels of population growth concentrated in London and the South East (Map 2 below).
17. Over the longer term ONS project the County Durham population to grow by **34,500 people by 2043** equivalent to a **6.6%** increase from a **2018** base. This rate of growth is just over half the rate of growth in England (+10.3%) but higher than growth projected across the North East (+4.1%).

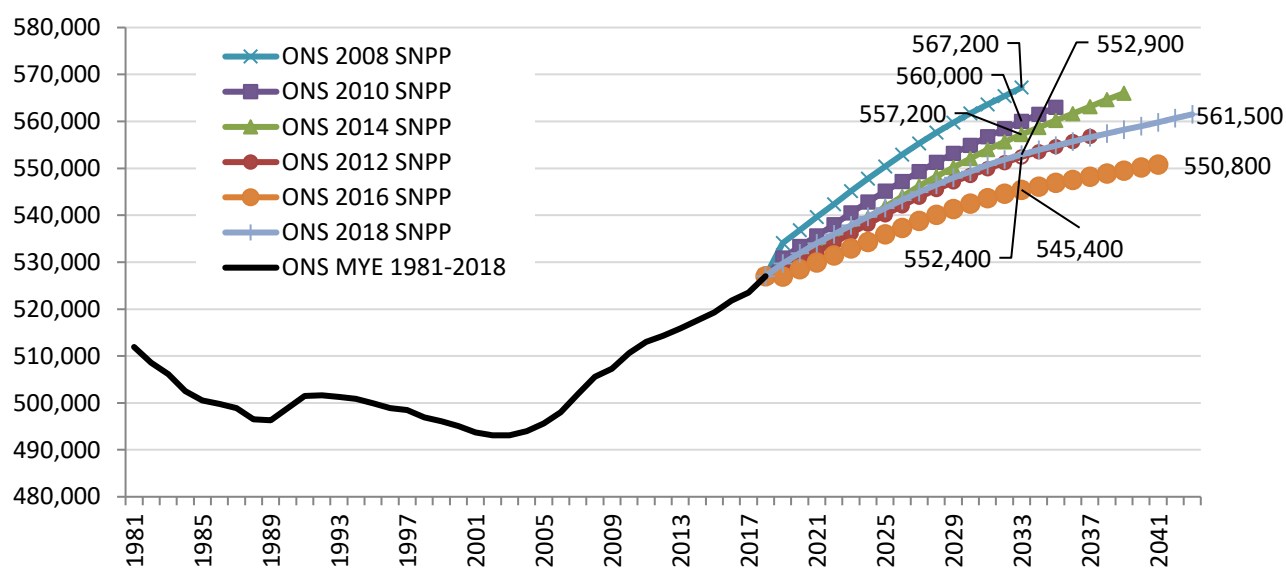
**Table 1:** ONS 2018 projected change from 2018 for 2028 and 2043

	2018 base year	2018 ONS Projections			
		2028		2043	
		Count	% change from 2018	Count	% change from 2018
<b>County Durham</b>	526,980	546,494	3.7%	561,498	6.6%
<b>North East</b>	2,657,909	2,719,203	2.3%	2,767,146	4.1%
<b>England</b>	55,977,178	58,751,647	5.0%	61,744,116	10.3%

Source: ONS 2018 Population Projections.

18. This growth is lower than that projected in previous releases from the ONS. The ONS **2008 based (+5%)**, **2010 based (+4.3%)** and **2014 based (+4.1%)** population projections for the county both showed higher levels of population growth between the over lapping years **2018 and 2028 (2016 shows growth of 2.8%)**. However, it should be noted that ONS continue to project strong levels of continued population growth compared to trends overall since 1981. Figure 1 contains all recent projections for comparison as well as ONS population estimates stretching back to 1981 for context.

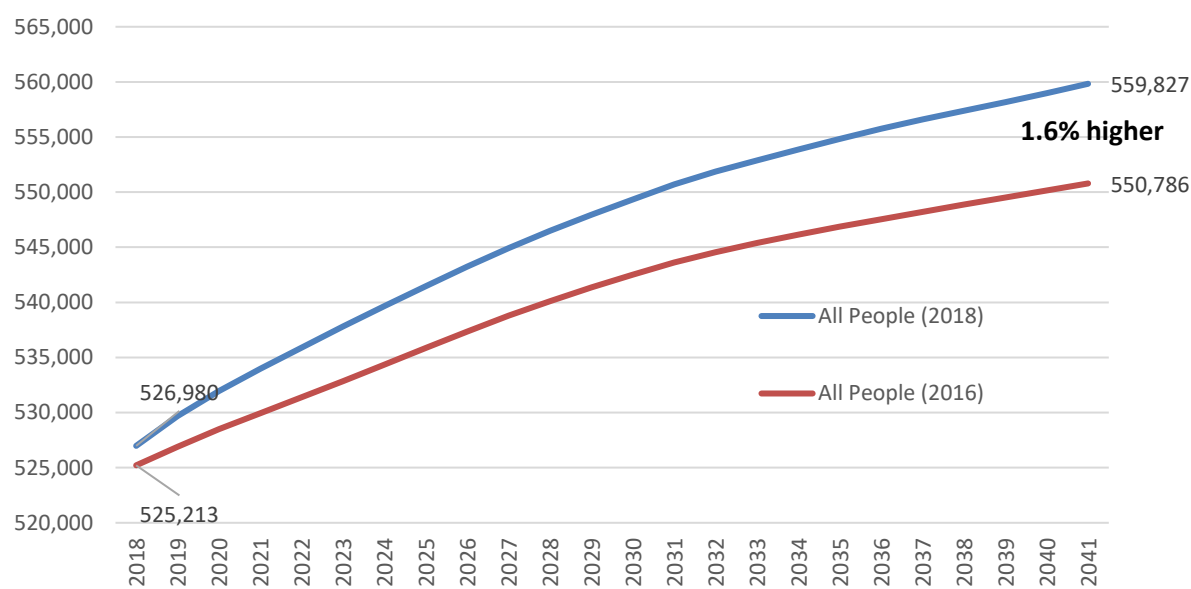
**Figure 1:** County Durham historic and projected population change (1981 to 2043)



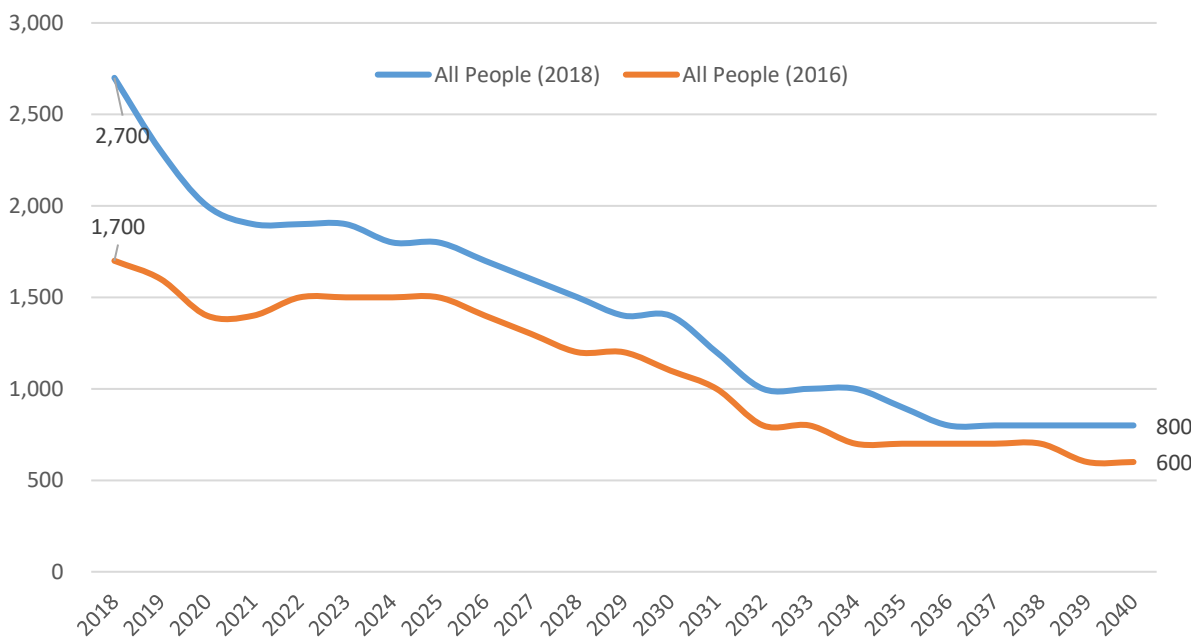
Source: ONS Mid-year Estimates 1981 to 2018; 2019 onwards - 2008 to 2018 Sub-national Population Projections

19. In many upper tier local authorities the 2018 SNPPs are lower than they were in the 2016 SNPPs. Of the **359** authorities in the complete 2018 dataset, **160** are predicted to have lower population projections by 2041 than in the 2016 dataset, (from a 2018 base year and 2018-2041 being the overlap period of the 2016 and 2018 SNPPs), with the projection for County Durham being **1.6%** higher, (and England being **1%** lower), in 2041. The charts below illustrate these differences in the county, between projections.

**Figure 2a:** Comparison between the 2016 SNPP and 2018 SNPP projections – Total Population 2018 to 2041 in County Durham



**Figure 2b:** Comparison between the 2016 SNPP and 2018 SNPP projections – Change per-annum 2019 to 2041 in County Durham

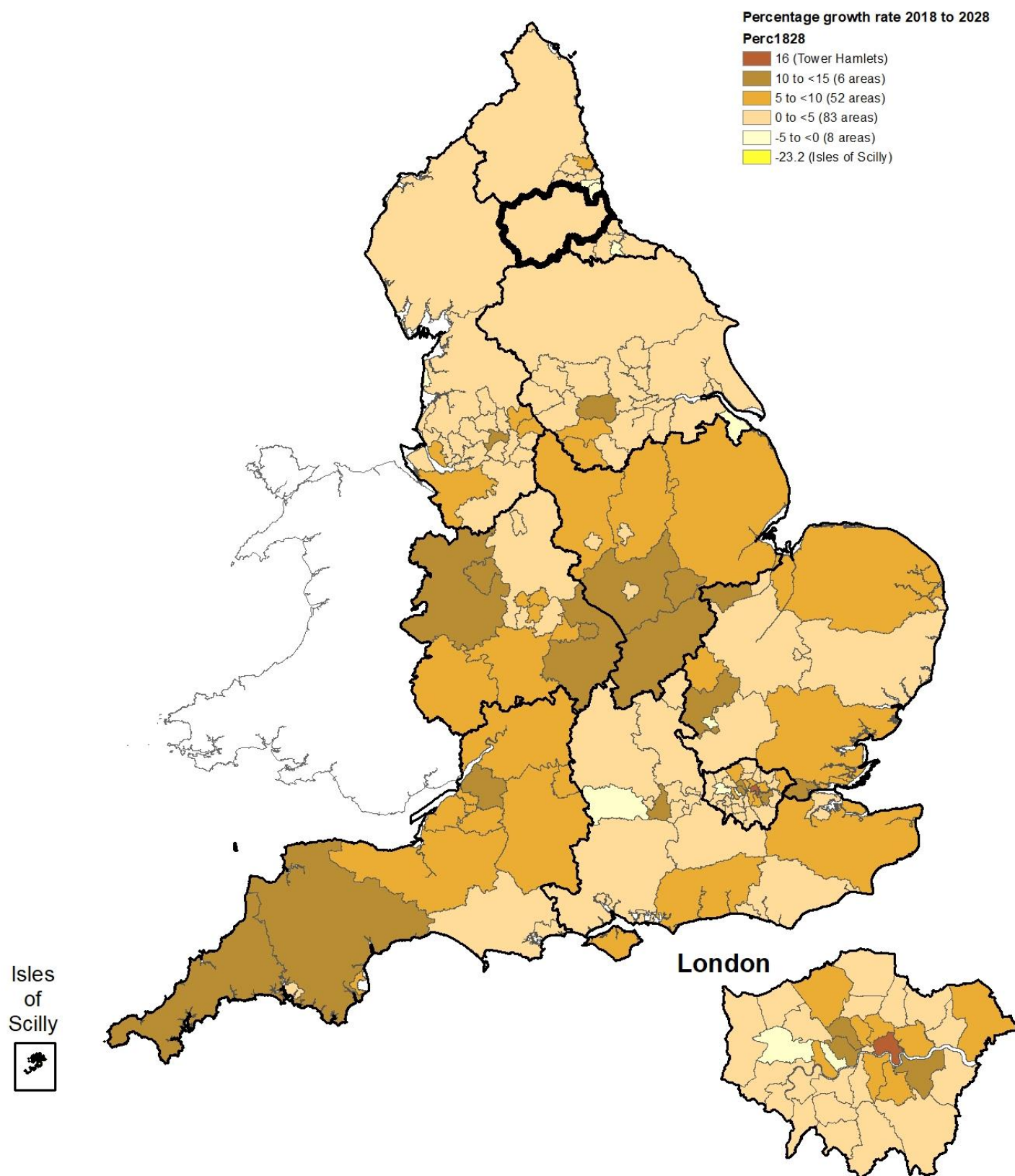


Source: 2016 and 2018 Sub-national Population Projections

### Change by English Upper Tier and Unitary Local Authority

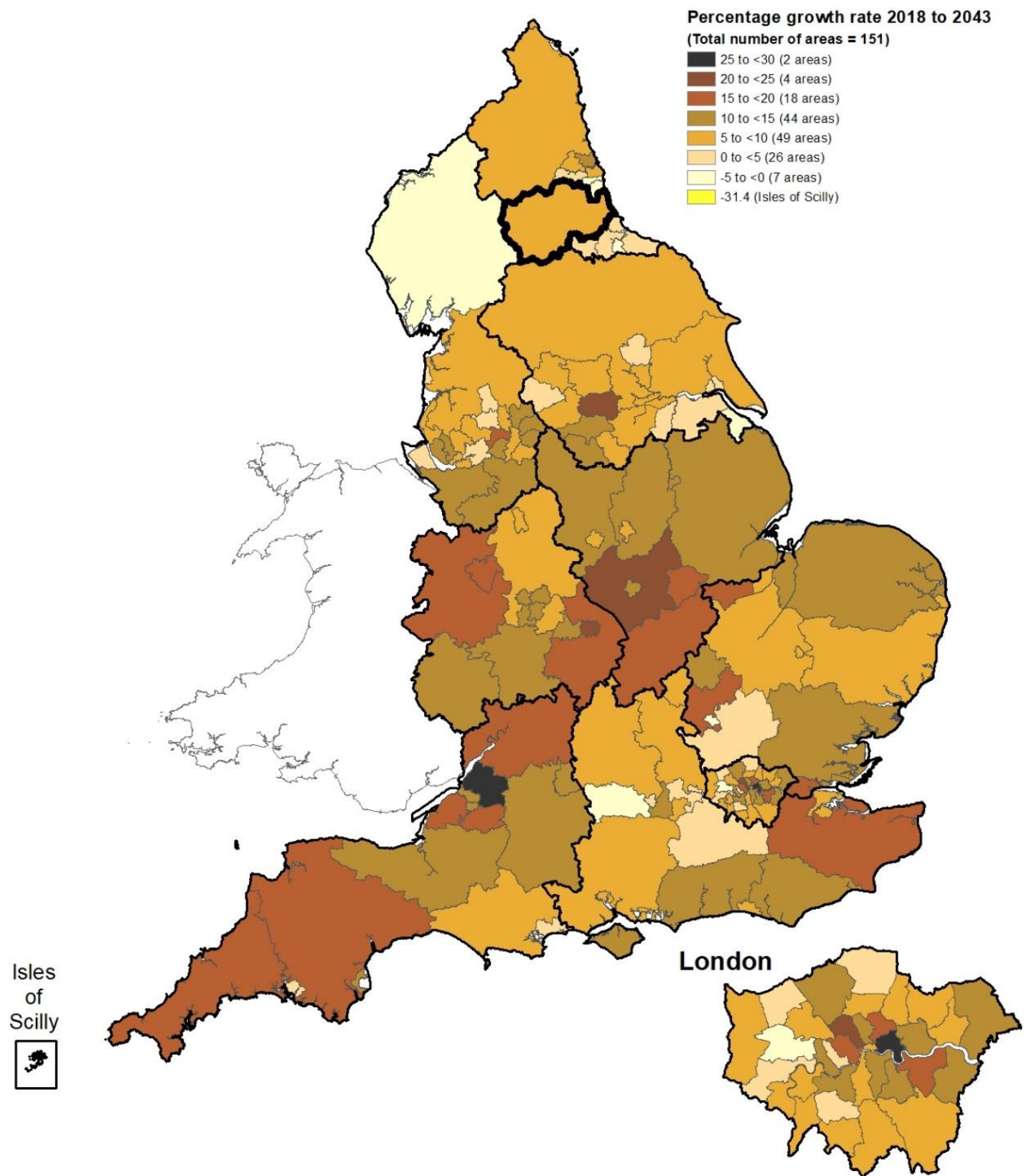
20. While these trends indicate some local growth, they also show that, because of much stronger growth elsewhere, County Durham’s share of England’s population overall is falling. Over the course of projections from 2018 to 2043 the county’s share of England’s population is predicted to fall from **0.94%** to **0.91%**. The following maps illustrate the change in population for the 151 upper tier local authorities across England for the periods 2018/2028 and 2018/2043.

**Map 1:** Projected population growth (%) by upper tier local authorities in England, mid-2018 to mid-2028



© Crown Copyright and database rights 2020. Ordnance Survey LA 100049055

**Map 2:** Projected population growth (%) by upper tier local authorities in England, mid-2018 to mid-2043



© Crown Copyright and database rights 2020. Ordnance Survey LA 100049055



21. County Durham is the second largest unitary authority in England, behind Cornwall. Over the course of the projection period the county is predicted to have the 30<sup>th</sup> largest percentage growth, with South Gloucestershire predicted to see the highest growth of 25.3%. Five UAs are predicted to see falls in their population, with the Isles of Scilly predicted to fall by 31.4%, (although this could, in part, be due to small numbers as the UA has the lowest population of all 56 UAs in England. The tables below show the changes predicted for the eight largest UAs in England and the top eight largest percentage increases.

**Table 2a:** Predicted unitary authority population change and ranks for the largest UAs in England by 2043

2018 Rank (on % change)	Authority	Population			% Change 2018 to 2043
		2018	2028	2043	
1	Cornwall	565,968	618,614	671,612	18.7
7	<b>County Durham</b>	<b>526,980</b>	<b>546,496</b>	<b>561,500</b>	<b>6.6</b>
3	Wiltshire	498,064	528,192	553,030	11.0
2	Bristol, City of	463,405	493,389	532,716	15.0
8	Bournemouth, Christchurch and Poole	395,784	403,611	408,951	3.3
4	Cheshire East	380,790	399,336	419,859	10.3
6	Dorset	376,484	392,364	406,841	8.1
5	Leicester	355,218	372,797	391,618	10.2
	North East	2,657,909	2,719,211	2,767,140	4.1
	England	55,977,178	58,751,651	61,744,098	10.3

**Table 2b:** Predicted unitary authority population change and ranks for the largest percentage increases by 2043

2018 Rank (on % change)	Authority	Population			% Change 2018 to 2043
		2018	2028	2043	
1	South Gloucestershire	282,644	314,135	351,780	24.5
2	Telford and Wrekin	177,799	194,867	211,246	18.8
3	Shropshire	320,274	349,609	379,660	18.5
4	Thurrock	172,525	189,256	204,431	18.5
5	Cornwall	565,968	618,614	668,464	18.1
6	Rutland	39,697	43,225	46,311	16.7
7	Peterborough	201,041	218,774	233,192	16.0
8	Bath and North East Somerset	192,106	207,919	222,163	15.6
<b>30</b>	<b>County Durham</b>	<b>526,980</b>	<b>546,496</b>	<b>561,500</b>	<b>6.6</b>
	North East	2,657,909	2,719,211	2,767,140	4.1

22. County Durham is predicted to have the second highest population increase by 2043 of **6.6%** out of the 12 North East local authorities, with North Tyneside seeing the highest increase of **10.4%**. Middlesbrough and Sunderland are predicted to see falls in their overall population of between **0.7%** and **1.3%** respectively; see table 3 below.

**Table 3:** Population change 2018 to 2043 by North East authority population

2018 Rank (on % change)	Population				% Change 2018 to 2043
	Authority	2018	2028	2043	
1	North Tyneside	205,985	216,747	227,355	10.4
2	<b>County Durham</b>	<b>526,980</b>	<b>546,496</b>	<b>561,500</b>	<b>6.6</b>
3	South Tyneside	150,265	154,983	159,681	6.3
4	Northumberland	320,274	331,105	339,415	6.0
5	Newcastle upon Tyne	300,196	308,945	315,755	5.2
6	Redcar & Cleveland	136,718	140,610	142,548	4.3
7	Stockton-on-Tees	197,213	200,364	201,186	2.0
8	Darlington	106,566	107,077	107,579	1.0
9	Gateshead	202,508	202,553	204,193	0.8
10	Hartlepool	93,242	93,687	93,863	0.7
11	Sunderland	277,417	277,161	275,409	-0.7
12	Middlesbrough	140,545	139,483	138,656	-1.3
	North East	2,657,909	2,719,211	2,767,140	4.1
	England	55,977,178	58,751,651	61,744,098	10.3

Source: ONS Population 2018 Projections

## Population change by age group

### Children and young people aged 0 to 17

23. The ONS projections for the county indicate that the growth in the number of children and young people will continue to grow until 2027, all be it more slowly than indicated by previous SNPPs. This is due to mainly changes in the 0-4 age group. However, by 2028 the 0-17 age group will start to fall and by 2043 will be **0.7%** lower than at the beginning of the whole projection period in 2018. Growth across England varies over this period with **1%** growth by 2026, with growth by 2043 only **0.2%**. Below is a further breakdown of this age group:

- Within this age group the number of children age 0 to 4 is predicted to fall by **6.7% (-1,800)** by 2028 from 27,000 to 25,200. From 2029 there will be a recovery with an overall increase of **2% (+550)** by 2043 from the 2018 base, over the whole projection period. There are falls predicted across the North East of **2.8%** for children aged 0 to 4 by 2043,
- Children and young people aged 5 to 17 will increase **2.2% (1,650)** by 2028, however it is predicted that from 2029 this group will start to fall and by 2043 will have fallen by **1.7% (-1,250)** over the full projection period. Across the North East those aged 5 to 17 are predicted to fall by **5.1%** by 2043,
- Corresponding figures 0 to 4 and 5 to 17-year olds for England Show that the 0 to 4 age group is predicted to rise by **1.1%** while those aged 5 to 17 will fall by **0.1%** by 2043.



### Working age people aged 18 to 64:

24. This group shows a slow consistent decline over the projection period with falls of **0.2%** by 2028 and **0.6%** by 2043 (from a 2018 base) in the county and falls **2%** and **2.9%** across the region respectively. This is in contrast to that across England where this age group is predicted to continue to increase with a **2%** increase by 2028 and an increase of **3.5%** by 2043 (both from a 2018 base).

### People aged 65 and over

25. The predictions across the older people age groups are similar across the county, region and nationally for the projection period. People aged 65 and over are predicted to increase by **18.7% (+20,300) by 2028** and by **34.3% by 2043** an increase of **37,300** people in the county, (regional increase of **34.3%/179,300** people; England increase of **44.7%/4.548** million by 2043).

### People aged 85 and over

26. This age group will see the largest percentage increase over the projection period with this group nearly doubling in size by 2043 with an increase of **92.8% rising from 12,300 people to 23,700**. This percentage increase is greater than that across the North East and England (**86.4%** and **87.4%** respectively). Further details are provided in tables 2 and 3 below and figures 3a and 3b below.

**Table 4a:** Projected population change by main age groups in County Durham 2018 to 2028 and 2043

2018 Base		2018 ONS Projections			
		2028		2043	
		Count	% change from 2018	Count	% change from 2018
0-4	27,021	25,210	-6.7%	27,568	2.0%
5-17	74,019	75,674	2.2%	72,773	-1.7%
18-64	317,350	316,718	-0.2%	315,296	-0.6%
65+	108,590	128,892	18.7%	145,861	34.3%
85+	12,311	15,102	22.7%	23,738	92.8%
All People	526,980	546,494	3.7%	561,498	6.6%

Source: ONS 2018 Population Projections.

**Table 4b:** Projected population change by main age groups in the North East 2018 to 2028 and 2043

2018 Base		2018 ONS Projections			
		2028		2043	
		Count	% change from 2018	Count	% change from 2018
0-4	144,069	131,442	-8.8%	140,058	-2.8%
5-17	385,606	390,027	1.1%	365,769	-5.1%
18-64	1,605,862	1,573,066	-2.0%	1,559,621	-2.9%
65+	522,372	624,668	19.6%	701,698	34.3%
85+	64,392	76,137	18.2%	120,053	86.4%
All People	2,657,909	2,719,203	2.3%	2,767,146	4.1%

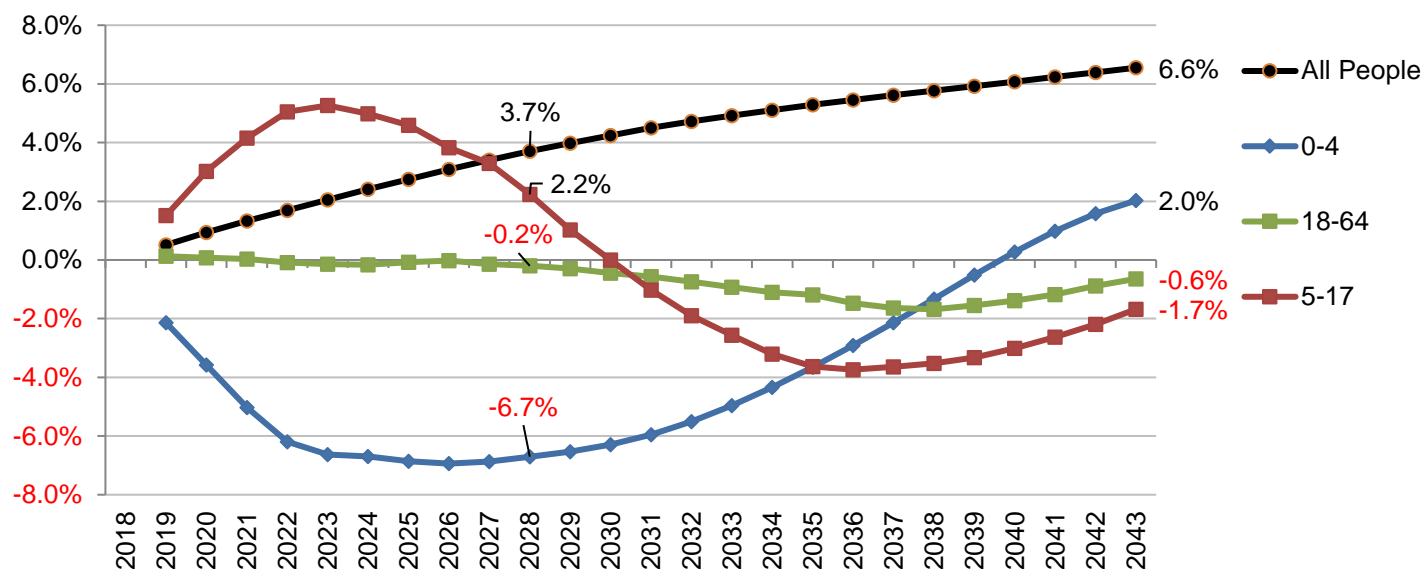
Source: ONS 2018 Population Projections.

**Table 4c: Projected population change by main age groups in England 2018 to 2028 and 2043**

	2018 Base	2018 ONS Projections			
		2028		2043	
		Count	% change from 2018	Count	% change from 2018
<b>0-4</b>	3,346,727	3,101,487	-7.3%	3,382,110	1.1%
<b>5-17</b>	8,607,891	8,969,412	4.2%	8,600,104	-0.1%
<b>18-64</b>	33,843,307	34,505,058	2.0%	35,034,924	3.5%
<b>65+</b>	10,179,253	12,175,690	19.6%	14,726,978	44.7%
<b>85+</b>	1,364,978	1,675,795	22.8%	2,557,451	87.4%
<b>All People</b>	<b>55,977,178</b>	<b>58,751,647</b>	<b>5.0%</b>	<b>61,744,116</b>	<b>10.3%</b>

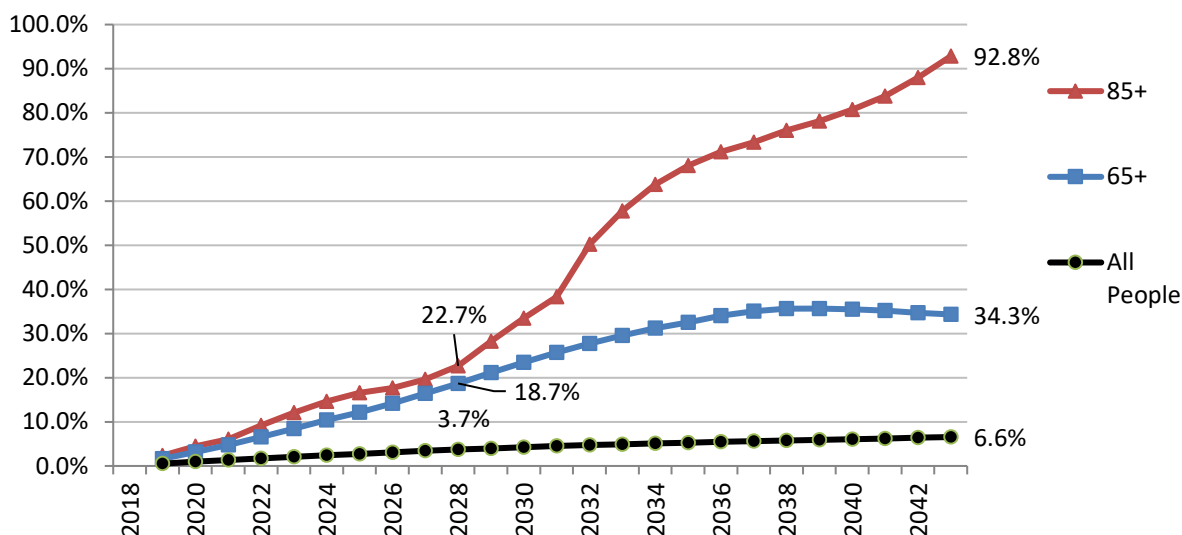
Source: ONS 2018 Population Projections.

**Figure 3a: Percentage change by age group (2018 to 2043) in County Durham: people aged under 65 years of age**



Source: ONS 2018 Sub-national Population Projections

**Figure 3b:** Percentage change by age group (2018 to 2043) in County Durham: people aged 65 and over and 85 and over



Source: ONS 2018 Sub-national Population Projections

**Table 5:** Projected population change by main age groups: county, regional and national comparisons between 2018 and 2043

	2018 ONS Projections (000's)								
	County Durham			North East			England		
	2018 base year	2043	% change from 2018	2018 base year	2043	% change from 2018	2018 base year	2043	% change from 2018
<b>0-4</b>	27.0	27.6	2.2%	144.1	140.1	-2.8%	3,346.7	3,382.1	1.1%
<b>5-17</b>	74.0	72.8	-1.6%	385.6	365.8	-5.1%	8,607.9	8,600.1	-0.1%
<b>18-64</b>	317.4	315.3	-0.7%	1,605.9	1,559.6	-2.9%	33,843.3	35,034.9	3.5%
<b>65+</b>	108.6	145.9	34.3%	522.4	701.7	34.3%	10,179.3	14,727.0	44.7%
<b>85+</b>	12.3	23.7	92.7%	64.4	120.1	86.5%	1,365.0	2,557.5	87.4%
<b>All People</b>	527.0	561.5	6.5%	2,657.9	2,767.1	4.1%	55,977.2	61,744.1	10.3%

Source: ONS 2018 Population Projections.

## Components of change

27. Population growth and demographic change is best understood as the result of a combination of two factors; natural change and migration. Natural change describes the change in an area as a result of the number of births minus the number of deaths. Migration describes the difference between people moving into the county from other parts of the country and from international points of origin and those who leave the county during the same period.
28. ONS projections have undergone revisions as methodological weaknesses have been explored over recent years in both ONS population estimation and projection work. Much of the revision is related to the measurement of international migration but also updating assumptions using latest administrative and census data.
29. It is important to note that both internal and international migration flows record the movement of individuals from one place to another regardless of nationality. Both internal and international migrants may have differing national identities and include UK nationals returning to the UK after living abroad.
30. Over the course of time it is possible that people will move from being internal to international migrants and vice versa. For example, an individual may move into the UK from abroad in one year and then move elsewhere in the UK the next year becoming an internal migrant.
31. The latest projections are higher than the 2016 SNPP across the projection period 2018 to 2041 and are **1.2%** higher by 2028 and **1.6%** higher by 2041.
32. These latest projections show a marked projected fall in net natural change (more deaths than births) over the course of the projections. However, this is offset by positive net migration, both in internal and international migration. The 2018 ONS SNPP shows that projected total net migration levels are positive and are estimated to be **68.8%** higher than those predicted in the 2016 SNPP by 2028 and **43%** higher by 2041 as shown in table 4 below.

**Table 6:** Cumulative components of change in County Durham 2028 and 2041 from the 2016 and 2018 SNPP

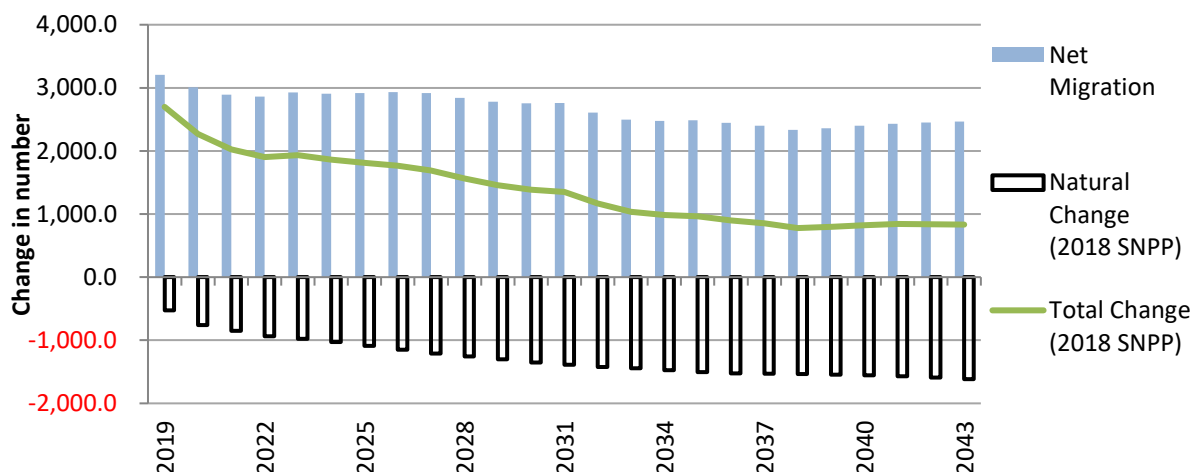
Component of change	Change by 2028 and 2041 (from 2019 base year)					
	Projections				% change from 2016 projections	
	2016		2018		2018	
	2028	2041	2028	2041	2028	2041
Natural change	-600.0	-1,100.0	-527.2	-1,570.9	-12.1%	42.8%
Total net migration	1,900.0	1,700.0	3,208.0	2,430.4	68.8%	43.0%
Internal net migration	1,400.0	1,200.0	2,119.8	1,612.0	51.4%	34.3%
International net migration	600.0	600.0	1,057.6	793.0	76.3%	32.2%
Cross Border Net migration	0.0	0.0	30.6	25.4	-	-
Overall Change	1,300.0	600.0	2,680.8	859.5	106.2%	43.3%

Source: ONS mid-2016 to 2018 population projections

Note: The 2016 projections covered 2016 to 2041 and the 2018 projections cover the period 2018 to 2043.

33. Table 6 above, hides the fact that internal migration flows (in and out) are much higher than international migration flows although they appear to contribute around twice the amount international migration contributes to overall population growth. This is significant given that internal migration flows are predicted to be nearly thirteen times higher on average than international flows over the course of the projection period, suggesting that fewer international migrants will enter the county than those nationally.
34. On average it is predicted that net population change will add **1,500** additional people per annum to the county's population over the projection period. These predicted changes in population, migration and natural change are summarised in figure 4 below.

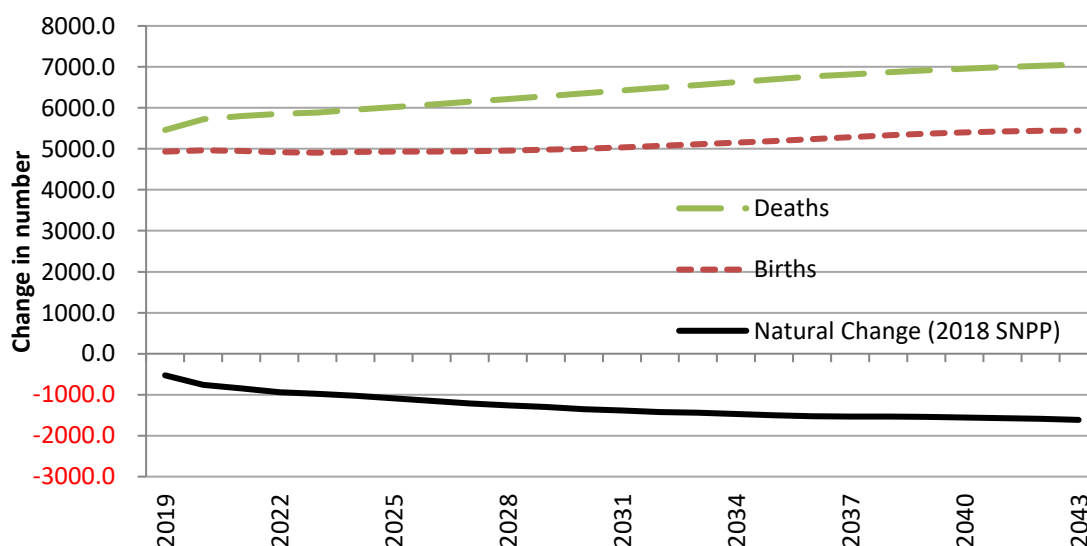
**Figure 4:** Components of change (annual figures) in County Durham 2019 to 2043



Source: ONS 2018 Sub-national Population Projections – Components of Change

35. By 2028 natural change will remove **9,800** people from the county's population. This trend is predicted to continue up to 2043 by which time natural change is predicted to have removed **32,100** people from the predicted population of the county. These changes are illustrated in figure 5 below.

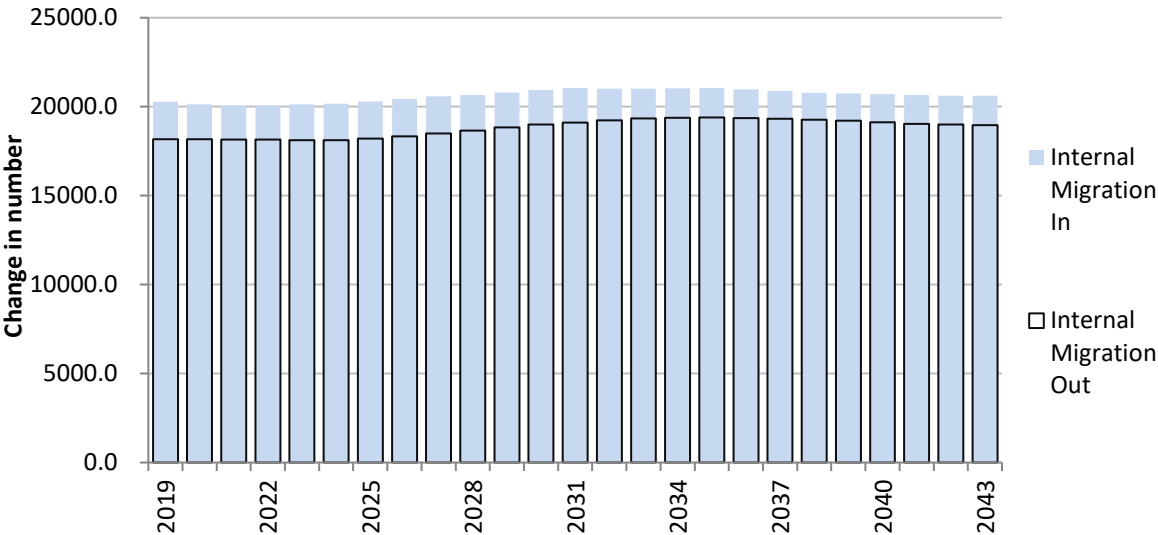
**Figure 5:** Natural change (annual figures) in County Durham 2019 to 2043



Source: ONS 2018 Sub-national Population Projections – Components of Change

36. Net internal migration is predicted to remain positive between 2018 and 2043 and will contribute an additional **45,500** people to the county’s population by 2043. These additional people will represent **8.1%** of the total population in County Durham by 2043. The differences in the components of change making up internal migration and their contribution to overall change are detailed in figure 6 below.

**Figure 6:** Internal migration change (annual figures) in County Durham 2019 to 2043



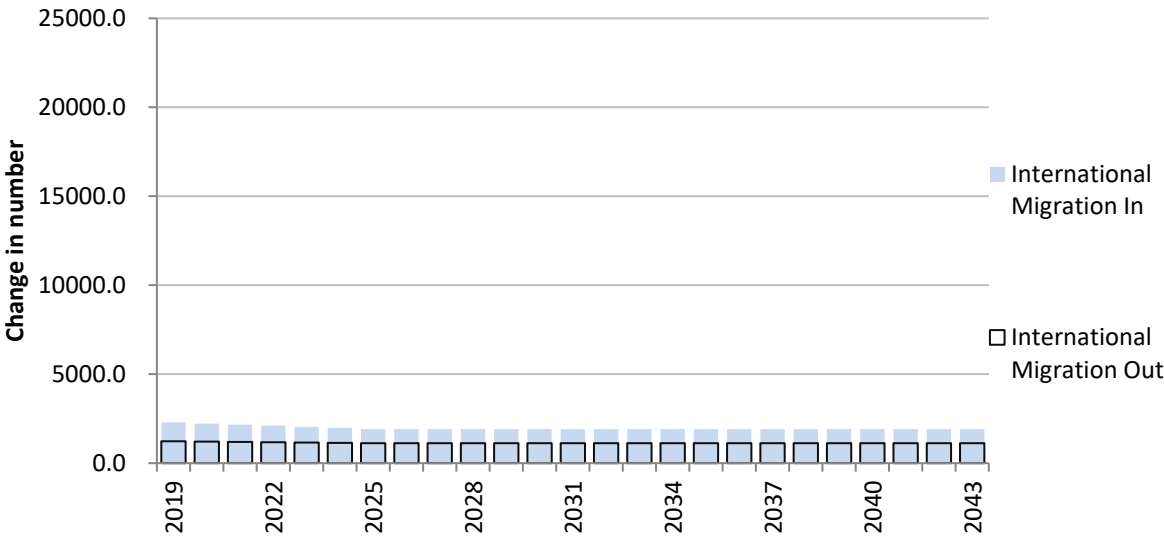
Source:

ONS 2018 Sub-national Population Projections – Components of Change

37. Although flows in international migration are lower than those seen in internal migration, this component is predicted to steadily add to the resident population of the county, year on year up to 2043. This component will contribute an additional **20,700** people to the county’s population by 2043. These additional people will represent **3.7%** of the total population in County Durham by 2043. However, it should be noted that migration into County Durham is low compared to other parts of England

38. Throughout the projection the levels of international migration are lower, at an average of **750 people per annum**, compared to **1,820 per annum** for internal migration. These changes are detailed in figure 6 below and also show the differences in scale between internal and international migration flows.

**Figure 6:** International migration change in County Durham 2018 to 2043



Source: ONS 2018 Sub-national Population Projections – Components of Change



## Links

**ONS:** <http://www.ons.gov.uk/peoplepopulationandcommunity/populationandmigration>

**Author:** Research and Public Health Intelligence Team

**Approver:** Research and Public Health Intelligence Team

**Published:** August 2020

**Review:** August 2022

**Data sources:**

<https://www.ons.gov.uk/peoplepopulationandcommunity/populationandmigration/populationprojections/datasets/householdprojectionsforengland>

**Other Links:**

**Durham Insight:** <https://www.durhaminsight.info/population/>

**Durham Insight Population Projections page:** <https://www.durhaminsight.info/population/related-factsheets-population/population-projections/>